



# Chips & Shavings

SOUTH PUGET SOUND  
WOODTURNERS  
(SPSW)

February 15,  
2009

## Contents:

President's Letter	Pg. 2
SPSW Contacts	Pg. 1
SPSW Calendar	Pg. 3
Monthly Demonstration	Pg. 4
Meeting Pictures	Pg. 5
Mentor Contacts	Pg. 7
Announcements	Pg. 7
Classifieds	Pg. 9
Woodworking Supplies	Pg. 10
Vendors	Pg. 11

## SPSW Contacts:

**President: Pat McCart**  
(253) 370-8986  
[jmccart5464@msn.com](mailto:jmccart5464@msn.com)

**V. President: Eric Lofstrom**  
(253) 320-4788  
[ellofstrom@msn.com](mailto:ellofstrom@msn.com)

**Secretary: Tom Hunt**  
(253) 854-3917  
[tomjhunt@att.net](mailto:tomjhunt@att.net)

**Treasurer: Paul Crabtree**  
(253) 273-2147  
[crabtreepaul@yahoo.com](mailto:crabtreepaul@yahoo.com)

**Membership: Fred Reinke**  
(253) 246-9953  
[reinkefnd@comcast.net](mailto:reinkefnd@comcast.net)

**Editor: Jeff Marsden**  
(206) 347-3521  
[jeffmarsden@me.com](mailto:jeffmarsden@me.com)

**Sawdust Sessions:**  
**Jim Cotter (Coordinator)**  
(206) 954-9548  
[cotterjimmy@hotmail.com](mailto:cotterjimmy@hotmail.com)

**Program Director: Jim Cotter**  
(206) 954-9548  
[cotterjimmy@hotmail.com](mailto:cotterjimmy@hotmail.com)

**Industry Coordinator:**  
**Bob Mower**  
(253) 846-8277  
[zeebob33@gmail.com](mailto:zeebob33@gmail.com)



## Hollow Vessel by Eric Lofstrom

See page 2 for details



## **President's Letter & Meet the Turner**



### **The results are in.**

During the January meeting I passed around a clipboard and asked you to list any topics or items that you would like to see demonstrated or discussed at one of the two mini-symposiums that are planned for this year. After reviewing the extensive list and compiling the numbers it was clear that every area of wood turning had some interest. The spectrum of your requests ranged from basic tool terminology and how to properly use each tool, all the way to hollow forms with lidded boxes inside. Ideas for more topics covered everything from how to safely cut a turning blank from a log, to selling your turned treasures at a profit.

Our diligent and resourceful program director Jim Cotter has meticulously scrutinized the list and found that one area of woodturning got more requests than any other. Segmented woodturning turned out to get the most requests for demonstration. This fact should not be surprising given the noted increase in the numbers of high quality segmented turnings that are making their way to the "show & tell" table at each meeting.

These pieces are ranging from pens to large hollow forms with hundreds and hundreds of pieces

As fate would have it and a little fortunate timing thrown in the SPSW is proud to host one of the premier segmented woodturners in the nation. Malcolm Tibbetts will be giving 2 demonstrations for the SPSW. He will be showing what goes into precisely constructing and successfully turning a segmented vessel with hundreds, if not thousands, of pieces. The first class will be February 19th at Bob Sweazey's shop starting at 9:00am. The cost is \$25 contact Jim Cotter for tickets.

Malcolm will also be our featured demonstrator at regular Feb. 19th meeting in Fife at 7:00pm. Don't miss these terrific learning opportunities.

**See you on the 19th, and remember be safe, make chips and have fun!**

***-Pat McCart, SPSW***

**Meet this month's Turner.** This Month's cover photo is a hollow form Vessel by **Eric Lofstrom.**

**How long have you been turning and what interested you in wood turning to start with?**

I have been turning since January 2002. I saw a demonstration at the Sumner Woodworker Store on how to turn a pen & letter opener set and couldn't believe how fast a finished product could come from a raw chunk of wood. My wife bought me a lathe for Christmas and that is all it took to completely hook me!

**Do you have a particular type of turning you prefer over another? Bowls, pens, spindle etc...**

I like ALL types of turning. I feel like I'm still searching for my turning niche. I find a huge amount of satisfaction in just making shavings no matter what project is in front of me! I also prefer smooth flowing curves and a sense of balance in whatever I am turning.

**What is your favorite wood to turn?**

I really don't have a single favorite wood because it depends on the project.

Currently, my favorite woods to turn are: Maple, Madrone, Alder, and Cherry because they are readily available and cut nicely with a sharp tool.

**What was your inspiration for the hollow vessels you brought to the meeting last month?**

My parents. My mom is an avid quilter and also weaves, my dad is a song-writer and musician. The vessels have elements to honor both of them; basket weave style texture with quilt squares and the glowing of light from the guided inners.

**How long did it take you to make the hollow vessel on the Newsletter cover?**

It's hard for me to say exactly, as I get so involved in the process that I typically lose all track of time. I would guess that the larger vessel took about 1 hour on the lathe and approx. 12 hrs. off the lathe with embellishments.





**Participation Tickets** – If you participate in **Show & Tell**, **Wood Donation**, or **Set-Up/Clean-Up**, make sure to fill out your **Participation Tickets**.

### **THIS MONTH AT A GLANCE**

- **MEMBERSHIP MTG - Feb. 19th (Thur.)**, 7:00-9:00 pm at Fife Senior Center
- **SAWDUST SESSION - Feb. 21st @ Pat McCart's Shop**
- **BOARD MTG. - Feb. 24th (Tues.)**, 7:00-8:30 pm at Les Johnson's, members welcome (RSVP to Pat McCart)

### **SPSW CALENDAR – 2009 At A Glance**

**Jan. 15** Membership Mtg:-

**Fred Holder - Making Chinese Balls**

**17** Sawdust Session at Pat McCart's

**27** Board Mtg. - Les Johnson's

**Feb. 19** Membership Mtg:-

**Malcolm Tibbets Segmented turning**

**19** Special all day class with Malcolm Tibbets - Segmented Turning

**21** Sawdust Session

**24** Board Mtg. - Les Johnson's

**Mar. 19** Membership Mtg:-

**2008 Annual Holiday meeting**

**21** Sawdust Session

**31** Board Mtg. - Les Johnson's

**Apr. 16** Membership Mtg:-

**TBD**

**18** Sawdust Session

**28** Board Mtg. - Les Johnson's

**May 21** Membership Mtg:-

**TBD**

**23** Sawdust Session

**26** Board Mtg. - Les Johnson's

**June 18** Membership Mtg:-

**Summer Symposium**

**20** Sawdust Session

**30** Board Mtg. - Les Johnson's

**July xx** Picnic / Wood Auction

**16** Membership Mtg:-

**TBD**

**18** Sawdust Session at Pat McCart's

**28** Board Mtg. - Les Johnson's

**Aug. 20** Membership Mtg:-

**TBD**

**22** Sawdust Session

**25** Board Mtg. - Les Johnson's

**Sept. 17** Membership Mtg:-

**TBD**

**19** Sawdust Session at Pat McCart's

**25** Board Mtg. - Les Johnson's

**Oct. 15** Membership Mtg:-

**Fall Symposium**

**17** Sawdust Session at Pat McCart's

**27** Board Mtg. - Les Johnson's

**Nov. 19** Membership Mtg:-

**TBD**

**21** Sawdust Session at Pat McCart's

**24** Board Mtg. - Les Johnson's

**Dec. 18** Membership Mtg:-

**Annual Holiday Mtg.**

**20** Sawdust Session at Pat McCart's

**30** Board Mtg. - Location TBD



## This Month's Demonstrator: Malcolm Tibbetts



### About the Artist

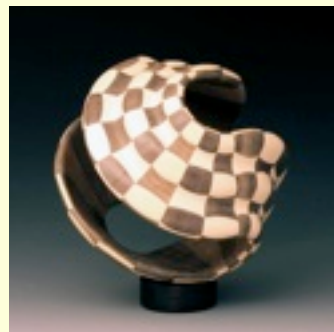
I assembled my first two pieces of wood together more than fifty years ago as a youngster in my granddad's workshop. He certainly passed on his love for working with wood and it has always been a serious hobby. In the mid 90's, after building many furniture pieces and after acquiring a shop full of tools, my woodworking journey took me to the wonderful world of segmented woodturning - a truly unique art form.

I have a wonderful marriage, two terrific grown children, a successful past career in the ski industry, and now plenty of personal time to pursue my woodturning passion. For many years (before becoming a fulltime turner), I was represented by the Stones Gallery in downtown San Francisco. [A Frame of Mind Gallery](#) in South Lake Tahoe, California now exclusively presents my work.

My turnings have won many awards and prestigious collectors have acquired many of my pieces. I was recently approached by Linden Publishing company to reveal some of my techniques in the form of a "how to" book on the subject. My book, [The Art of Segmented Woodturning](#) is now available.

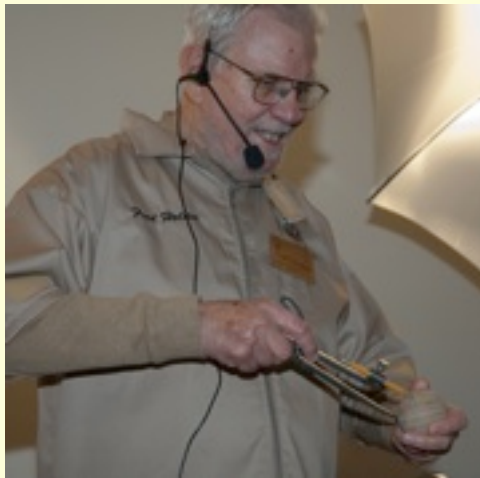
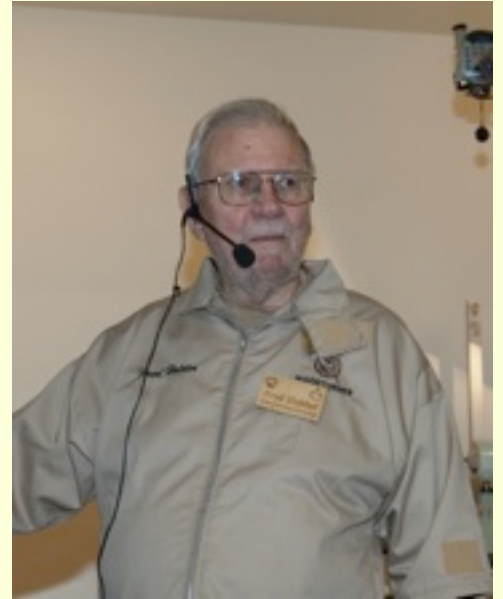
### Artist's Statement

Segmented woodturning is an art form with few limitations. By combining components, I can create just about any shape or size and by arranging different wood species, I can create just about any type of surface design. There are few art forms with this much freedom. This lack of restriction keeps my mind engaged contemplating the possibilities. Long before I have finished one piece, my mind is busy designing and solving the technical challenges of my next project. I have always loved working with wood and this art form gives me the opportunity to work with woods from around the world. It thereby gives me the opportunity to share these wonderful materials with many people. Beautiful wood is almost a magical substance; gallery visitors experience an uncontrollable urge to touch the surfaces that I have created using these treasures of nature. Many designs require innovative assembly solutions, much like puzzle solving; and just like the joy of solving a puzzle, there is great joy in inventing assembly techniques. I do what I do because "it's fun" - the designing, the joy of working with wood, the puzzle solving, and the interaction with other people.





**Last Month's Demonstrator - Fred Holder**  
Photos by Fred Abeles: For additional Club photos by Fred please go to  
<http://avoided-artist.smugmug.com/Woodworking>





### Last Month's Meeting





## Announcements

### ***Are you a new member or visiting our club for the first time?***

We are glad you are here and want to welcome you to our general membership meeting. **Please introduce yourself to an officer or mentor so we can welcome you.**

***Need help with a splintering question?***  
**Contact one of our "MENTORS."** These club members have stepped up and would like to use their knowledge and expertise to help other turners with their questions. If these turners aren't able to answer your question, they will do their best to help you find a solution.

### **SPSW Mentors**

- **Ted Bartholomew**  
(253) 779-0819
- **Jim Cotter**  
(206) 954-9548
- **Paul Crabtree**  
(253) 273-2147
- **Jack Hegseth**  
(360) 832-8499
- **Hal Johnson**  
(425) 788-2221
- **Eric Lofstrom**  
(253)-320-4788
- **Pat McCart**  
(253) 370-8986
- **John Moe**  
(425) 643-4522
- **Dave Schweitzer**  
(360) 432-9509
- **Bob Sievers**  
(360) 897-8427
- **Jack Wayne**  
(425) 488-9561

- **SEATTLE AAW MEMBERSHIP MEETING –**  
2nd Thursday of each month, Overlake School in Redmond
- **OLYMPIA AAW MEMBERSHIP MEETING –**  
4th Thursday of each month, Thurston County Fairgrounds

**The South Puget Sound Woodturners now has a club policy for harvesting wood as a club function. Please go to our website <http://www.SPSWoodturners.org> for details.**

- **Vendor donations** - It's that time of year again when we ask our membership to bring a turned item to donate to the club that we can send to the vendors who support our hobby. It is a nice way to say thank-you for the gift certificates, discounts and excellent customer service we receive from them throughout the year.  
This year as an added incentive for every piece you donate you will be eligible to receive 2 additional participation tickets. (Don't tell Pat I told you this, but just between you and me, if you also put your piece into Show and Tell you'll get *three* tickets! One for Show & Tell and two for donating your piece.)  
Bob Mower will be accepting your donations at January and February's meetings and will have a table set up to receive them. Please note that we would like to send out the gifts in March if possible, so please get them in as soon as possible.  
To make other arrangements you can contact Bob at (253) 846-8277 or email him at: [zeebob33@gmail.com](mailto:zeebob33@gmail.com)
- **It's time to start planning for the 2009 AAW symposium.** It will be held in Albuquerque, NM on June 26 - 28, 2009. The AAW website will publish details as they become available.
- **Membership Dues** - It's that time of year again when we start collecting membership dues for 2009. Please get your memberships renewed by March. Memberships not renewed as of the March meeting will be ineligible to receive April's and subsequent Newsletters.



## Announcements Continued

- **Remember to sign up for the Malcolm Tibbets Demo Day.** On Thursday Feb. 19th. Malcolm will be giving an all day class on his segmented turning process. The cost for this session is \$25.00. Jim Cotter will be collecting the fees. Please give cash to Jim or mail checks made out to the SPSW to: Jim Cotter, 4326 S 239th Pl, Kent WA, 98032.
  - **Wooden Laser Engraved Name Tags** are now available. The cost is \$10. To order a name tag please see Les Johnson at our supplies table at the monthly meeting.
  - **Mark your calendars- the Woodturners of Olympia WA 2009 “Creativity in Woodturning” Symposium** will be held Saturday, July 25, 2009. Eric Lofstrom will begin the day with a demonstration on woodturning basics. Eric will be followed by Jimmy Clewes. Jimmy is a well-known teacher and demonstrator in his native England as well as here in the USA. He will be performing demonstrations covering:
    - Design, shape, form & aesthetics
    - Oriental Boxes
    - Turning a twist and long stem goblet, and Colorings
 The cost for the full day is \$70 for early payment. After June 1, 2009 the cost is \$80. Children under the age of 18 can register for \$10 if attending with a paying adult. Lunch is included in the cost if payment is received before July 12. Demonstrations will start promptly at 8 a.m. and end by 4:30 p.m. Door prize drawings will be made after the final presentation. Location is the Komachin Middle School located at 3650 College St. SE, Lacey, WA 98503. For more information or to register see <http://www.woodturnersofolympia.org/> or send payment directly to Al Price at 4112 Teakwood Ct. SE, Lacey, WA 98503. Questions may also be directed to Al at 360-791-0396 or [aprice44@aol.com](mailto:aprice44@aol.com)
- In addition to the symposium, Jimmy will be putting on either a one day or a two day class for up to 8 people per class. The Olympia Club is looking for feedback on preference to help determine whether it'll be a one or two day class. A one day class with Jimmy will cost \$125 and two days will be \$250. Please email Larry Miller at; [sawdusterlarry@hotmail.com](mailto:sawdusterlarry@hotmail.com) or Al Price [aprice44@aol.com](mailto:aprice44@aol.com) if you're interested. The Classes would be Sunday/Monday, July 26-27.



### THE TREE SPEAKS

I am the heat of your hearth on cold winter nights;  
 the cooling shade from the summer sun.  
 I am the paper that feeds the press, that makes  
 the books for knowledge and history.  
 I can be a match stem to a ship's mast,  
 I am the humblest cabin and furnish the greatest mansion,  
 I have served you from cradle to grave,  
 I can do no other,  
 I am a gift from God,  
 I am a friend of man,  
 I AM THE TREE!

Poem Provided by Ted Bartholomew





## Up Coming Club Raffles

Tickets \$2.00 each or 3 for \$5.00

The next drawing will be held at the April meeting.

- **Tickets will go on sale in February** for a turning class with **Eric Lofstrom**. The drawing for the class will be held in April.
- **In May** tickets will go on sale for a **Jet Mini Lathe** with the drawing being held in July.

## Classified Ads

Would you like to place an ad? Contact Jeff Marsden at (206) 347-3521 or [jeffmseattle@yahoo.com](mailto:jeffmseattle@yahoo.com)

2009 SPSW Membership: \$25 for single / family membership (only one card issued per \$25). Contact Fred Reinke at the general membership meeting or contact our treasurer, Paul Crabtree at (253) 273-2147 or [crabtreepaul@yahoo.com](mailto:crabtreepaul@yahoo.com)

**Beginning to intermediate general woodturning classes offered** for groups or individuals. Specific classes also offered in box making, platters, hollowing, and natural edge forms. Cost for all classes is \$85 and includes taxes and wood. Children ages 10 to 16 welcomed at no charge.

Contact **Larry Miller** on [Sawdusterlarry@hotmail.com](mailto:Sawdusterlarry@hotmail.com) or call **360-412-1583** for more information or to sign up. All classes given in his shop in Hawks Prairie just South of DuPont, Washington.

**This month's Club Special - Please remember to support those who support us.** Current membership card must be presented at time of purchase to qualify for special offers from the vendors below. Offers are valid for in-store purchases only.

**Woodcraft** furnishes all types of turning supplies in addition to a wide general stock of wood-working equipment. Additionally, a 10% discount (excluding power tools) is available off your purchases when you show your current club membership card.



Woodcraft is now carrying Sierra Mold Corporation's woodworking tools - stop in and check out the selection.

Your Seattle **Woodcraft** is located at 5963 CORSON AVE SOUTH, SEATTLE. Tel: (206) 767-6394.



## Club supplies

The following items are available for purchase at the monthly meetings. The proceeds earned from the sale of these items go back into the club.

CODE	DESCRIPTION	PRICE
	<b>GLUE</b>	
HS-4	HOT STUFF (Thin) 2 oz	9.00
HST-4	SUPER "T" (GAP) 2 oz	9.00
HS-4T	SPECIAL "T" (Thick) 2 oz	10.00
BSI	5 MIN. EPOXY 4.5 OZ 4.5 oz	6.00
	<b>ACCELERATOR</b>	
QA-6	NCF QUICK AEROSOL 6 oz	11.00
	NCF MILD 2 oz	6.00
	<b>COMPANION PRODUCTS</b>	
US-1	ULTRA SOLVENT 2 oz	5.00
HT-600	GLUE CAP REPLACEMENTS	1.00
PT-100	TIP EXTENSIONS 4	1.00
301	TIP EXTENSIONS 3	1.00
303	LONG TIPS 4.5 oz	1.00
322	CA APPLICATOR FINE	1.00
	<b>OTHER</b>	
IND	INDEX WHEELS	20.00
SEAL	SEALER 1 gal	12.00
	FINISH 1 pt	12.00
	FRICTION POLISH 1 pt	14.00
	<b>SANDING</b>	
MICRO M	3" x 6" SHTS 1 ea	13.00
MICRO M	3" x 6" SHTS 2 ea	24.00
	<b>GRITS 80 THROUGH 1000</b>	
	SANDPAPER (5) 5	2.00
	<b>GRITS 80 THROUGH 220</b>	
	SAND CLOTH (1)	1.00
	<b>DISKS</b>	
DISCS	2" SANDING KIT	25.00
DISCS	3" SANDING KIT	30.00
	<b>GRITS 80, 120, 180 &amp; 280</b>	
DISCS	2" SANDING KITS 10	2.00
DISCS	3" SANDING KITS 10	3.00



## Vendors



Tukwila (206) 244-9161  
<http://www.rockler.com>

Woodturning Classes  
Saturdays 9am-4pm  
\$65 Plus Tax  
Ted Bartholomew (253) 779-0819

**CRAFT SUPPLIES USA**  
— THE WOODTURNERS CATALOG —

(800) 551-8876  
<http://www.woodturnerscatalog.com>

Tropical Exotic Hardwoods  
Of Latin America  
Mitch Talcove (760) 434-3030

Equipment Sales & Surplus  
1801 West Valley Hwy N  
Auburn, WA 98001-1605  
(253) 804-3211



Seattle (206) 767-6394  
<http://woodcraft.com>



(800) 683-8876  
[packardwoodworks.com](http://packardwoodworks.com)

Sumner Woodworking Store  
John and Joan Schmit  
Sumner (253) 891-9413



CROSSCUT  
HARDWOODS  
Seattle (206) 623-0334

Treeline  
1221 East 1120 South  
Provo, UT 84606  
(800) 598-2743  
<http://www.treelineusa.com>



(800) 547-5461

Klingspor's  
Woodworking

P.O. Box 3737 Hickory NC 28603-3737  
(800) 228-0000