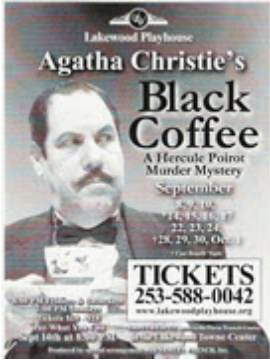




# Chips & Shavings

September 13, 2010

## September - Michael Dresdner



MICHAEL DRESDNER is a nationally known finishing and woodworking expert, consultant, lecturer, columnist, and author of several videos and well over 200 articles. His books include [The New Wood Finishing Book](#), *Build Like a Pro: Painting and Finishing and Finishing Fixes*, a guide written in question-and-answer format. He has been a contributing editor to *Fine Woodworking*, *American Woodworker*, and *Woodworker's Journal*. He has written byline columns for *Vintage Guitar Bulletin*, *Stringed Instrument Craftsman*, *Guitarmaker*, *American Woodworker*

and *Woodworker's Journal*.

His primary addiction outside the field of wood is community theatre. In addition to working behind the scenes, he frequently acts in plays at [Lakewood Playhouse](#) and [Tacoma Little Theatre](#).

This month Michael will be making a presentation on cold-bend hardwood from Fluted Beams LLC in Gig Harbor. For those of you who have not seen this product I can only say that it is amazing. This is a meeting that you will not want to miss.

## Elections

It is that time of year again when we need to start thinking about our very own upcoming November elections. They aren't nearly as exciting as the national elections, no conservatives, no liberals, and certainly no tea parties. Well maybe a little electric ice tea.

What we really need are a few club members who are willing to step up and take a little bigger part in the club. We need help. There are several jobs open, both elected and appointed. None of them require a great deal of time. We just need a few reliable people who will step forth and help.

If you think you might be willing, please contact Andy Firpo, Eric Lofstrom, or Pat McCart at the club meeting. Andy and Eric volunteered to be the election committee.

### Contents:

Cover & SPSW Contacts	Pg. 1
President's Letter	Pg. 2
SPSW Calendar	Pg. 3
Meeting Pictures	Pg. 4
Last Month's Show & Tell	Pg. 5
Mentor Contacts	Pg. 6
Announcements	Pg. 6
Classifieds	Pg. 8
Woodworking Supplies	Pg. 9
Vendors	Pg. 10

### SPSW Contacts:

**President: Pat McCart**  
(253) 370-8986  
[jmccart5464@msn.com](mailto:jmccart5464@msn.com)

**V. President: Eric Lofstrom**  
(253) 320-4788  
[Eric@ericlofstrom.com](mailto:Eric@ericlofstrom.com)

**Treasurer: Les Johnson**  
(253) 896-0650  
[Grandpasturn@comcast.net](mailto:Grandpasturn@comcast.net)

**Membership: Fred Reinke**  
(206) 246-9953  
[reinkefnd@comcast.net](mailto:reinkefnd@comcast.net)

**Editor: Bill Wood**  
(253) 891-2887  
[Tapsturner@comcast.net](mailto:Tapsturner@comcast.net)

**Sawdust Sessions:**  
**Jim Cotter (Coordinator)**  
(206) 954-9548  
[cotterjimmy@hotmail.com](mailto:cotterjimmy@hotmail.com)

**Program Director: Jim Cotter**  
(206) 954-9548  
[cotterjimmy@hotmail.com](mailto:cotterjimmy@hotmail.com)

**Industry Coordinator:**  
**Bob Mower**  
(253) 846-8277  
[zeebob33@gmail.com](mailto:zeebob33@gmail.com)

**Secretary: Tim Ramsaur**  
(253) 841-4663  
[Rgroup5@hotmail.com](mailto:Rgroup5@hotmail.com)



## Letter from the President

### September Thoughts



With the transition from a less than blistering summer to a possible cold and snowy winter, fall is just around the corner.

Each fall the SPSW holds elections for the Board of Directors positions and appoints other members to fill other critical club positions. We are actively seeking members who are willing to volunteer to fill one of the open positions that has been created by the departure of a few of our long serving board members. This is a terrific opportunity to contribute your talents to the continuing success of the SPSW. No prior experience or expertise is required and all members are eligible. If you are interested contact either Eric Lofstrom, Andy Firpo or myself.

Significant progress has been made toward the purchase of a much needed equipment trailer for the SPSW. We have defined our requirements and are actively looking at both new and used units that fit those parameters. Funds raised by the generous support of the membership at our wood auction and monthly wood raffle are going into a dedicated fund. We are well over halfway to our goal of \$3000.

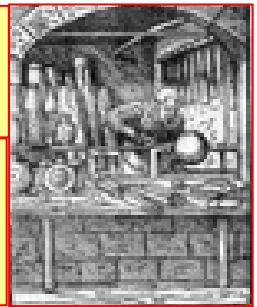
The SPSW is a 'not for profit' 501c3 that will gladly accept your generous tax deductible donations. We will cheerfully provide you with a receipt for your donation no matter how big or small. 100% of these donations go directly into the trailer fund.

Other upcoming events that the club will be involved with are the Seattle Woodcraft stores' open house Oct. 1st, 2nd and 3rd. Stop by and see their greatly expanded and newly remodeled store. Be sure to check out their state of the art new classrooms filled with top of the line equipment. They will be generously offering some terrific discounts along with some great sale prices. Be sure you stop by and take advantage of this opportunity.

November 13th and 14th the Northwest Woodcarvers are holding their annual show and sale at the Puyallup Fair grounds. The SPSW will have a booth there to both demonstrate the craft of woodturning and share our creations with the public. I will have a signup sheet at the next meeting.

See you on the 16th. Have fun, be safe, make shavings.

Pat



## SPSW 2010 Event Calendar

### January

21st - Membership Mtg  
**Art Liestman**  
23rd - Sawdust Session  
26th - Board Mtg  
Les Johnson's

### February

18th - Membership Mtg  
**Bob Espen**  
20th - Sawdust Session  
23rd - Board Mtg  
Les Johnson's

### March

18th - Membership Mtg  
**Symposium**  
20th - Sawdust Session  
30th - Board Mtg  
Les Johnson's

### April

10th - Spring Clean-up  
15th - Membership Mtg  
**Eric Lofstrom**  
17th - Sawdust Session  
27th - Board Mtg  
Les Johnson's

### May

20th - Membership Mtg  
**Stephen Hatcher**  
22nd - Sawdust Session  
26th - Board Mtg  
Les Johnson's  
6th-8th - Utah  
Woodturning  
Symposium Provo, UT

### June

17th - Membership Mtg  
**Symposium**  
19th - Sawdust Session  
29th - Board Mtg  
Les Johnson's  
18th-20th - 24th Annual  
AAW Symposium  
Hartford, CT

### July

15th - Membership Mtg  
**Paul Crabtree**  
**16th - Eli Avisera Event**  
17th - Picnic & Wood  
Auction  
27th - Board Mtg  
Les Johnson's  
24th-27th - Olympia 2010  
Woodturning  
Symposium

### August

19th - Membership Mtg  
**Special Event**  
21st - Sawdust Session  
31st - Board Mtg  
Les Johnson's  
20th-22nd - Turn-On!  
Chicago 2010  
[www.chicagowoodturners.com](http://www.chicagowoodturners.com)

### September

16th - Membership Mtg  
**Michael Dresdner**  
18th - Sawdust Session  
28th - Board Mtg  
Les Johnson's  
10th-12th - West Coast  
Roundup Surrey, BC

### October

21st - Membership Mtg  
**Symposium**  
23rd - Sawdust Session  
26th - Board Mtg  
Les Johnson's

### November

18th - Membership Mtg  
**John Shrader**  
20th - Sawdust Session  
30th - Board Mtg  
Les Johnson's

### December

16th - Membership Mtg  
**Annual Holiday Mtg**  
18th - Sawdust Session  
28th - Board Mtg  
Les Johnson's

Upcoming national & international events courtesy of Fred Holder and More Woodturning

### This Month at a Glance

- Membership Mtg. - Sep 16th (Thur.) 7:00 - 9:00 pm at Fife Senior Center
- Sawdust Session - Sep 18th (Sat) - 9:00 am to mid-afternoon at Nancy Swezey's
- Board Mtg. - Sep 28th (Tue.) 7:00 - 8:30 pm at Les Johnson's, members welcome (RSVP to Pat McCart)



## Last Month's Demonstration

Photos by Fred Abeles: For additional Club photos by Fred please go to <http://avoided-artist.smugmug.com/Woodworking>

Unfortunately, there are no photos from last month's meeting.

In their place, here is a list of turning related videos available courtesy of the AAW. These can be accessed at the AAW web site [woodturner.org/resources/](http://woodturner.org/resources/).

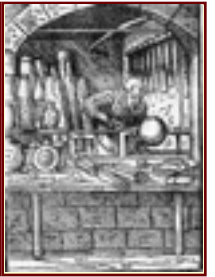


**The following videos are provided free of charge for viewing and download. The video format is "WMV" (Microsoft Windows Media Player) or MP4. Click on each link below to view the video, or right-click on the link and save the video (Save Target As...) to your hard-drive for viewing later. Many of these short videos introduce DVD and VHS products [sold through this site](#).**

### Online Videos:

- The American Association of Woodturners - [Who We Are - What We Offer \(10 minutes\)](#)
- 2009 Albuquerque Symposium - [Opening Day](#)
- 2009 Albuquerque Symposium - [Vendor Trade Show Area](#)
- 2009 Albuquerque Symposium - [Symposium Walk-About](#)
- 2009 Albuquerque Symposium - [Chapter Collaboration and Instant Gallery](#)
- 2009 Albuquerque Symposium - [Resident Artists](#)
- 2009 Albuquerque Symposium - "[Marble Run](#)" created by the [First State Woodturners](#)
- 2008 Richmond Virginia Symposium - [Instant Gallery, Critiques and Special Exhibits](#) - [DVD sales](#)
- 2008 Richmond Virginia Symposium - [Techniques Volume One](#) - [DVD sales](#)
- 2008 Richmond Virginia Symposium - [Techniques Volume Two](#) - [DVD sales](#)
- 2008 Richmond Virginia Symposium - [Vendor/Trade Show, new products](#)
- 2007 Portland Oregon Symposium - [Binh Pho's tribute to Frank Sudol and Live Auction Excerpt](#)
- 2007 Portland Oregon Symposium - [Complete 13 minute Frank Sudol tribute](#)
- 2007 Portland Oregon Symposium - Vendor/Trade Show in [high resolution \(Cable/DSL\)](#) or [low resolution \(Dial-up\)](#)
- 2006 Louisville Kentucky Symposium - [Instant Gallery](#) - [DVD sales](#)
- 2006 Louisville Kentucky Symposium - [Techniques Volume One](#) - [DVD sales](#)
- 2006 Louisville Kentucky Symposium - [Techniques Volume Two](#) - [DVD sales](#)
- [Mark St. Leger, Skill Building Projects](#) - 6 minute teaser from the 93 minute video - [VHS tape & DVD sales](#)





## Last Month's Show & Tell

(Photo's by Bill Wood)

I will apologize right up front for this month's pictures. They were taken with my cell phone and are the only ones we have available.





## Announcements

### *Are you a new member or visiting our club for the first time?*

We are glad you are here and want to welcome you to our general membership meeting. **Please introduce yourself to an officer or mentor so we can welcome you.**

#### *Need help with a splintering question?*

**Contact one of our "MENTORS"**. These club members have stepped up and would like to use their knowledge and expertise to help other turners with their questions. If these turners aren't able to answer your question, they will do their best to help you find a solution.

### SPSW Mentors

- **Ted Bartholomew**  
(253) 779-0819
- **Pat McCart**  
(253) 370-8986
- **Jim Cotter**  
(206) 954-9548
- **John Moe**  
(425) 643-4522
- **Paul Crabtree**  
(253) 273-2147
- **Dave Schweitzer**  
(360) 432-9509
- **Jack Hegseth**  
(360) 832-8499
- **Bob Sievers**  
(360) 897-8427
- **Hal Johnson**  
(425) 788-2221
- **Jack Wayne**  
(425) 488-9561
- **Eric Lofstrom**  
(253)-320-4788

- **SEATTLE AAW MEMBERSHIP MEETING** – 2nd Thursday of each month, Kenmore Community Club, 7304 NE 175th St, Kenmore, WA
- **OLYMPIA AAW MEMBERSHIP MEETING** – 4th Thursday of each month, Thurston County Fairgrounds
- **Wooden Laser Engraved Name Tags** are now available. The cost is \$10. To order a name tag please see Les Johnson at our supplies table at the monthly meeting.
- The South Puget Sound Woodturners now has a club policy for harvesting wood as a club function. Please go to our website <http://www.SPSWoodturners.org> for details.
- In order to receive club discounts from some of our mail order vendors we are required to provide them with an up-to-date membership list. This is so to verify that you are a member in good standing with the club and therefore entitled to the discount they provide us. If you would prefer not to be included on the list please email Fred Reinke at [reinkefnd@comcast.net](mailto:reinkefnd@comcast.net).

Please note that if you remove your name from the list the vendor will not honor a club discount for your phone or (e)mail purchases.

**~Keith Palmer SPSW Librarian**

## International Wood Collectors Society (ICWS) Meeting

The International Wood Collectors [IWCS], a great club for all wood workers, is having a two day meeting in Florence, Oregon on September 25 & 26. Lots of demos, a saw mill, a good show, and lots of wood at a cheap price.

For more info call:

Fred= [f holder2@verison.net](mailto:f	holder2@verison.net)

Alan= [abcwoods1@gmail.com](mailto:abcwoods1@gmail.com)

Ted= [t7b8@gte.net](mailto:t7b8@gte.net)



## Next Month - Symposium

Join us next month for another exciting evening of live demonstrations and opportunities to learn from some of the finest turners and craftsmen in our club. Bring any tools that need to be sharpened to learn this essential part of turning from one of our members. As usual, this promises to be a very worthwhile event for the novice as well as the more advanced turners.

Some of the planned demonstrations include safety, turning small bowls, making pens, segmented turning using the Beall Pen Wizard, and sharpening.

If there is something else you would like to see demonstrated or something you would like to demonstrate let us know at this month's meeting

---

## Benefits for all AAW members and membership types:



- Six issues of *American Woodturner* annually
- Automatic participation in periodic drawings for prizes - [click here](#) for more info
- Access to all past issues of *American Woodturner* through the [Members Only Area](#)
- Access to machine-readable American Woodturner issues for those members who are visually impaired, and use computer screen reading software - [contact the webmaster](#) if this applies to you.
- [Marketing opportunities](#) on our website for artists, collectors, galleries and museums
- Group rates for [health and life](#) insurance (US members only)
- Group rates for [commercial business insurance](#) (US members only)
- AAW members receive [bodily injury insurance](#) for chapter-affiliated demonstrations or events under the liability insurance that AAW provides to local chapters
- Savings of up to 50% on [AAW merchandise](#), including project books, DVDs, logo apparel and more!
- Merchant discounts available exclusively to AAW members
- Eligibility to apply for AAW [Educational Opportunity Grants](#)
- AAW Forum and member-only access to articles and resources on our website
- Eligible to vote in AAW board elections if a member prior to the end of August in that year
- Eligibility to apply for membership in the [Professional Outreach Program](#) (POP)
- Access to [POP Fellowship grants](#)
- Exhibit opportunities - AAW members may enter work for the annual juried member exhibit featured at the Symposium, the Gallery of Wood Art in St. Paul and other art venues
- Annual [International AAW Woodturning Symposium](#)
- Access to apply for demonstration opportunities at AAW Symposiums
- AAW [Resource Directory](#) (printed biennially), which contains a complete listing of contact information for members, local chapters, demonstrators, and other woodturning resources. Updated listings are also available to members through the [AAW website](#).
- [Over 300 AAW local chapters](#) offer workshops, camaraderie, opportunities to share ideas and techniques, and access to lending libraries, discounts, and volume purchases



## Classified Ads

Would you like to place an ad? Contact Bill Wood at (253) 891-2887 or [tapsturner@comcast.net](mailto:tapsturner@comcast.net)

2010 SPSW Membership: \$30 for single / family membership (only one card issued per \$30). Contact Fred Reinke at the general membership meeting or contact our treasurer, Les Johnson at (253) 896-0650 or [grandpasturn@comcast.net](mailto:grandpasturn@comcast.net)

Cont'd from pg 4

- [Robert Rosand, Turning Projects from Scrap](#) - 7 minute snippet from the 93 minute video - [VHS tape & DVD sales](#)
- [Rus Hurt, An Introduction to Bowl Turning](#) - 5 minute intro to the 1 hour, 24 minute video - [DVD sales](#)
- [Fundamentals of Sharpening](#) - Short intro to the 1 hour, 30 minute video - [DVD sales](#)
- [William Hunter, Woodturning Innovator/Sculptor](#) - Snippet from the 1 hour 33 minute video - [DVD sales](#)
- [MDF Rose Engine by Jon Magill](#) - Supplemental info to "Build Your Own Rose Engine Lathe", pages 52-53, Spring 2007
- [Stacey Hager's Point Tool creation and demonstration](#) - Associated article in the Fall 2005 *American Woodturner* journal

### YouTube Videos

- These same videos are available for viewing though the AAW's YouTube Channel, [by clicking here](#).

### Videos Usage

- **Note that video files tend to be large.** Download times over dial-up phone lines may exceed one hour.
- If the video does not work, upgrade to the latest Windows Media Player [by clicking here](#).
- If you are a Mac (Apple) user, and want to view this video with QuickTime, consider [downloading this plug-in](#) so you can view Windows Media Player video on a Mac.





## Club supplies

The following items are available for purchase at the monthly meetings. Proceeds earned from the sale of these items go back into the club.

CODE	DESCRIPTION	PRICE
	<b>GLUE</b>	
HS-4	HOT STUFF (Thin) 2 oz	9.00
HST-4	SUPER "T" (GAP) 2 oz	9.00
HS-4T	SPECIAL "T" (Thick) 2 oz	10.00
BSI	5 MIN. EPOXY 4.5 OZ 4.5 oz	6.00
	<b>ACCELERATOR</b>	
QA-6	NCF QUICK AEROSOL 6 oz	11.00
	NCF MILD 2 oz	6.00
	<b>COMPANION PRODUCTS</b>	
US-1	ULTRA SOLVENT 2 oz	8.00
HT-600	GLUE CAP REPLACEMENTS	1.00
PT-100	TIP EXTENSIONS 4	1.00
301	TIP EXTENSIONS 3	1.00
303	LONG TIPS 4.5 oz	1.00
322	CA APPLICATOR FINE	1.00
	<b>OTHER</b>	
IND	INDEX WHEELS	20.00
SEAL	SEALER 1 gal	12.00
	FINISH 1 pt	12.00
	FRICTION POLISH 1 pt	14.00
	<b>SANDING</b>	
MICRO M	3" x 6" SHTS 1 ea	13.00
MICRO M	3" x 6" SHTS 2 ea	24.00
	<b>GRITS 80 THROUGH 1000</b>	
	SANDPAPER (5) 5	2.00
	<b>GRITS 80 THROUGH 220</b>	
	SAND CLOTH (1)	1.00
	<b>DISKS</b>	
DISCS	2" SANDING KIT	25.00
DISCS	3" SANDING KIT	30.00
	<b>GRITS 80, 120, 180 &amp; 280</b>	
DISCS	2" SANDING KITS 10	2.00
DISCS	3" SANDING KITS 10	3.00



## Our Sponsors



Tukwila (206) 244-9161

**CRAFT SUPPLIES USA**  
— THE WOODTURNERS CATALOG —

(800) 551-8876  
<http://www.woodturnerscatalog.com>

Equipment Sales & Surplus  
1801 West Valley Hwy N  
Auburn, WA 98001-1605



(800) 683-8876      [packardwoodworks.com](http://packardwoodworks.com)

**Treeline**

1221 East 1120 South  
Provo, UT 84606 (800)598-2743  
<http://www.treelineusa.com>

**Klingspor's Woodworking**

P.O. Box 3737 Hickory, NC 28603-3737  
(800)228-0000



**D-WAY TOOLS INC.**

[www.d-waytools.com](http://www.d-waytools.com)      360-432-9509



[www.moredturning.net](http://www.moredturning.net)

Woodturning Classes  
Saturdays 9am-4pm \$65 Plus Tax  
Ted Bartholomew (253) 779-0819

Tropical Exotic Hardwoods  
Of Latin America  
Mitch Talcove (760) 434-3030



Seattle (206) 767-6394      <http://woodcraft.com>

Summer  
*Wood Worker Store*

Joan & John Schmit      253-891-9413



(800) 547-5461

**CROSSCUT  
HARDWOODS**  
Seattle (206) 623-0334

DJ & Judi Brown

(253) 301-2075



**Laser Engraving**

Don't forget **Woodcraft's In-Store Woodworking Show Oct. 1 -3**

Friday, October 1 (9 am – 7 pm)  
Saturday, October 2 (9am – 6 pm)  
Sunday, October 3 (9am – 3 pm)