

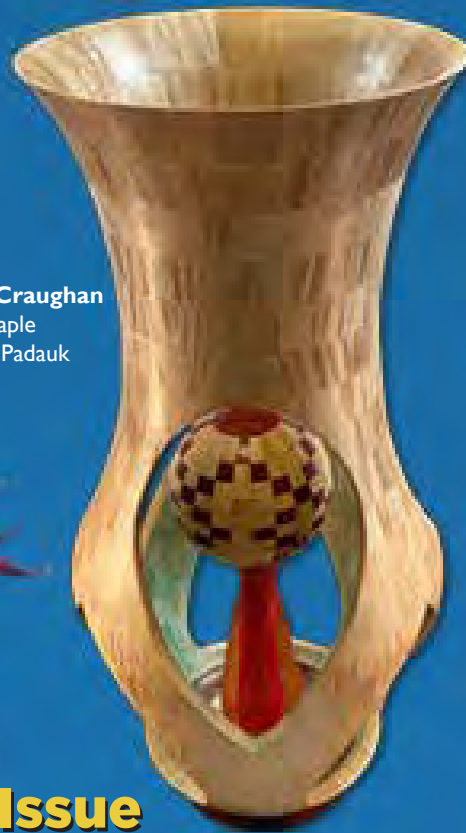
# CHIPS &

May 2026

The latest news and updates from  
South Puget Sound Woodturners



S  
H  
A  
V  
I  
N  
G  
S



Dennis Craughan  
White Maple  
Sepele & Padauk

## In This Issue

- [May President's Letter](#)
- [May Demo: Ethan Green Multi-Axis Box](#)
- [May Store](#)
- [2026 Calendar of Events](#)
- [A Word From Kent Horton](#)
- [National Symposium](#)
- [Devin Garlick - Wood Rats](#)
- [Kaden's Cause](#)
- [SPSW - Westend Woodturners Sawdust Sessions](#)
- [Dust Collector Maintenance](#)
- [SPSW Officer List](#)
- [2026 Membership Renewal](#)
- [ZOOM Instructions](#)



Mike Schmaltz  
Base Claro Walnut Burl  
Walking Sticks: Koa

## May President's Letter By Kathy Garlick

May is Here!

Wow, time has sure flown quickly. I can't believe it is already May! So far this year we have had some exceptional demonstrations, kicking off the year with Rick Rich followed by our very own Doug Reynolds in February. March brought a fun and busy Mini Symposium then we had the extraordinary Elizabeth Weber last month. We have two of three paid workshops down in the books and from the looks of it and the glow of the workshop participants, success! For our 'Members Only' focus clinics this year, Ethan has knocked it out of the park first with his 'band saw' clinic and his recent 'better cuts' clinic as well as the much enjoyed 3-part 'epoxy' clinic by Travis Miller. We are definitely off to the races this year and from the looks of it we are in the lead all the way! May demonstrator is our very own Ethan Green demonstrating a multi-axis turned box.

Speaking of May and into June, we have a few opportunities before us to stretch ourselves and reach out into the community. There is an opportunity to get out into the community in the Spring Festival in White Center. Please reach out to Kent Horton at his contact info at the end of the newsletter. Also in May, we have been invited to join Rockler on May 30th for their 30th Anniversary celebration at their location in Southcenter. We have been asked if we would like a table there and I am looking for a few volunteers to come and join me for the day. Please see me at the meeting or email me your availability. (At the time of printing we are still getting details of the event.) Last, but not least, on June 13th we will have our Puyallup Craft Fair event at the Tractor Supply on River Road. For the Craft Fair event, we are accepting donations of wood turned items, if you would like to sell some of your work, we will do a 50/50 with you, with proceeds going into our General Fund. If you would like to just help out day of, we can do that too. Reach out to Ed White or myself to coordinate your level of interest. Remember, you do not have to be on the Board of Directors to volunteer to help at any of these events. As a matter of fact, I would love to invite you to step up at any time. My email and phone are always welcome to you and your input will be taken into consideration in future events and how this group moves forward.

I know it is nowhere near September, but I would like to invite you to welcome our new Washington State Fair SPSW liaison, Ramon Lyn. He is taking over the responsibility from John Howard (thank you John for liaising with The Fair for these many years). With that being said, please consider demonstrating at The Fair this year. Each two hour shift includes two admission tickets and a free parking pass. You can work your shift and spend the rest of the day enjoying all of the festivities. Ramon will send out more info in the near future, so keep your eyes peeled.

Membership Renewal: Please see Brandi at the membership table and she can help you become up to date.

Wood Rats Membership: \$10 year cash or check only.

I look forward to seeing you all at our May meeting! Be safe out there and in your shop!

Happy Turning,  
*Kathy*



Reminder: The ticket tin at the membership table is for those who help out each month with set up, take down, general helping as listed on the tin, bringing a President's Challenge Piece, bringing a Show-and-Tell item. Each one of these things gets you one ticket. (Just sign your name on the back and put it in the tin.) These tickets are for our Christmas Party Participation raffle.

## “Art is Working with the Pith”



Ethan Green is a talented woodturner who enjoys ignoring convention when the opportunity arises. His work ranges from simple well-made small bowls to technically challenging thin-walled vessels with nicely positioned wild organic openings and features. He often seeks unique, highly contrasting wood that will highlight and be highlighted by the predetermined form he intends to make. For our May meeting Ethan will demonstrate how to turn a multi-axis lidded box.

Service to our chapter and its members is rewarding to Ethan. He continues in the role of Outreach Director as a board member of SPSW. Through his leadership, SPSW members donated over 230 bowls and other food-related turned objects to an Empty Bowls event held in Gig Harbor in March of this year. Ethan enjoys helping members improve their woodturning and related abilities. In this regard, he proposed a learning approach he dubbed the Focused Clinic. The idea was to offer small group learning sessions, about four hours in length covering topics, skills and knowledge of value to members. Ethan has taught two sessions on Wood Preparation and another on Finished Cuts and Other Techniques. Attendees have all enjoyed and appreciated these learning sessions. The cool thing is that this approach is spreading. Member Travis Miller recently held a three session Focused Clinic covering the Use of Resin in Woodturning.



I asked Ethan whether he considered himself an artist or a craftsman. He quickly replied, “Yes.” He then added that over time he has reluctantly become comfortable with the term artist. I followed by asking if he had any advice for early experience woodturners. He replied, “Get in over your head—while seeking instruction.” The idea is that one learns fastest when they push themselves, so don’t be afraid to learn fast. Circling back to art, he tied these two thoughts together by adding, “Art is Working with the Pith.”

*Ed White*

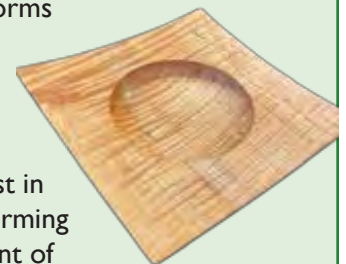
SPSW – VP & Program Director

### In Ethan’s Own Words

I think I’ve been a woodworker since I was in my single digits, but it didn’t really take off until I bought my first table saw in 1991. In 1994 I began woodworking for pay, operating a side hustle called Pine Tree Yoga Props, which is still in business under another owner. In the year before PTY changed hands in 2021, I responded to a Facebook ad offering a “Woodturning Experience” taught by Russell Neyman, in Port Orchard, during which I was taught some basics and turned a small bowl. I was hooked. Within a week I bought all the sharpening stuff and an armload of D-Way tools. Within two weeks a lightly used Powermatic 3520C fell into my lap. For the next six months or so I divided my shop time between learning to use my new turning equipment and meeting my flat woodworking obligations. Finally, the day came when I became a full-time turner.



Over the last five years I have been able to attend some very good demonstrations, I’ve met several world-class turners, and I spent three days with the late David Ellsworth, who remains one of my primary influences. My others are Richard Raffan and Tomislav Tomasic. Early in my turning career I focused on bowls, then I moved to hollow forms then very tiny hollow forms less than 2” inches in height and diameter. Today my interest is in lidded boxes and multiple axis turning. And being an avid collector of wood, to the observation that I seem to spend more time collecting it than turning it, I have no defense. My interest has also migrated toward teaching and demonstrating. These two latter interests come at least in part from my ongoing mentorship with Russell Neyman (in whose direction I bow). Performing in front of others does not come naturally to me so if you see me facing you from the front of the room please be gentle!



### May Store

The store sales table will be up and running during our May meeting with our full array of adhesives, abrasives, finishes, and wood-turning accessories. I will be unable to be there this month, but board member Tim Spaulding has generously volunteered to physically man the table at the May meeting. Thank you Tim!

Feel free to stop by and let us know how you like the materials you have gotten from our club's store. We are always interested in both your feedback and suggestions for things we might want to add to our inventory in the future.

Until then, stay sharp and keep those chips flying!

*John Howard*

(editor's note: There have been a few changes in what is stocked in the store, be sure to check out the [Store product list is on page 14](#) )



**Devin Garlick**

**Jim Robson  
Ash**



**John Sund  
Oak**



## 2026 Calendar of Events

Date	Time	Demonstrator(s)	IRD	Subject
May 21st	7pm	Ethan Green		Multi-Axis Box
Msy 23rd	9am	Sawdust Session		Wayne Wells' Shop*
June 18th	7pm	Tremblers (Trembleurs)		Kathleen Duncan
June 20th	9am	Sawdust Session		Wayne Wells' Shop*
Jul 16th	7pm	Devin Garlick		Optimal Wood Harvest for Interesting Figure
July 18th	9am	Sawdust Session		Wayne Wells' Shop*

\* 12012 28th Ave E, Tacoma 98445

**A Word From Kent Horton AAW Liason**

Hello again, this is Kent Horton your SPSW/AAW liaison with another newsletter installment speaking to the advantages of becoming a member of the American Association of Woodturners (AAW). I encourage all SPSW members to join AAW. By doing so and availing yourself to the many resources provided by the AAW (publications, videos and symposiums) you WILL become a better woodturner with many more tools in your tool box – beyond those you regularly use at the lathe.

I hope everyone who was interested in registering for the Virtual Symposium received the discount code that was sent out earlier by Tim Spaulding, (and did so before the registration window closed on April 30th). I have been looking over the list of the 20 presentations that will be available to live-stream on Friday, June 5th, through Sunday, June 7th and have been impressed with the variety of offerings. I appreciate being able to view recordings of these presentations via my computer from June 8th until August 31st. I often will watch selections of these recordings multiple times to make sure I fully understand the processes and finer details of tool control and finishing techniques employed. In preparation to view these presentations I will do a Google search of the presenter, read about their background and view their gallery of creations. I encourage others to do this as well – I find it helps get a better understanding of them and their work.

A major purpose of the AAW is to provide a means to make connections with other woodturners. I have personally found it very helpful to meet on a regular basis (Tuesdays, 12:00 noon to 3:00 pm) with Brian Finch and Jeff Marshall. This Tuesday Turning Group has provided me a great opportunity to seek advice about tool purchases and answer many questions related to woodturning. In recent months SPSW has expanded these growth opportunities with sawdust sessions, mentoring, and specialty workshops. Kudos to Kathy Garlick, Ed White, Michae Poirier, Ethan Green, Suzette Edwards and all of those in our club working to develop and strengthen these very important woodturning connections.

*Kent Horton,*

Director-at-Large

AAW Liaison

206.909.2701

[aawdirector@spswoodturners.org](mailto:aawdirector@spswoodturners.org)

Thank you!

Yours in turning,



**Herb Gaines**  
Aluminum & Wood

**AAW 40th Annual Woodturning Symposium**

**June 4-7, 2026**

**Raleigh Convention Center  
500 South Salisbury Street  
Raleigh, NC 27601**



More details on registration can be found [here](#).

Registration Type	Beginning 3/1
AAW Member	\$485
Non-Member	\$575
Spouse	\$233
Single Day	\$260
Sat Night Celebration	\$75
Student	\$99
Chapter Discount Code	\$445
Educator	Free

### Hello and welcome to The Harvest

April had us hoppin' and boppin from harvest to harvest with three, yes THREE back to back and overlapping harvests. We started out with an amazing walnut harvest, thank you John for the lead. Second was a maple that Mike Poirier had sourced out for us. Last, but not least was a harvest that included 7 of 11 cherry trees. All contained some excellent colors and beautiful wood.

We had a fun time, and were able to distinguish the portion of the tree to the projects in mind. It's refreshing to see the club members learning the different parts of the tree and where they want the pieces to come from.

We had a great turn out for each of the harvests. A big shout out to those who brought their chainsaws to help: Ethan, Brian, Ashley, Kent, if I forgot anyone, my apologies.

Head Rat,

*Devin Garlick*



**Ed White**  
Fumed Black Locust

**Dave Peters**  
Elm



**John Howard**  
Maple



Kaden's Cause



Our president Kathy Garlick learned of Kaden's Cause from her relationship with AAW. [Kaden's Cause](#) is a Florida-based non-profit that supports families affected by the tragedy of losing a child by assisting low-wealth individuals and families with funding to cover funeral/ cremation costs, and spread kindness throughout our communities. We, the South Puget Sound Woodturners, have the opportunity to support Kaden's Cause by providing urns for them to distribute to folks who have suffered unimaginable loss.

With requests for five to seven urns each week, there is always a need for more. Their perfect urn will have a threaded lid and will accommodate a range of 5 to 60 cubic inches. That's equal to about a half-cup to a quart. The wood and finish can be whatever one has available. These are lifelong memorials to the infants and small children that they have loved and lost. Because the urns are made with love and are works of art the families are reminded that their child's life mattered not only to them but to others.

Our current idea is to collect urns at quarterly intervals to send to Florida in one package to minimize shipping cost. Please expect to hear about Kaden's Cause during the May meeting.

*Ethan Green*



**SPSW - Westend Woodturners**  
~ **Come Get Better** ~ **Sawdust Sessions**

New to woodturning? Want to improve your turning? Stuck with a current turning project? Come join us at The Chuck Stop! (shop)

**Host:** Chuck Burke

**Location:** 15511 Bandix Rd. SE Olalla, WA 98359.

**When:** First Saturday of the month from 1PM to 4PM.

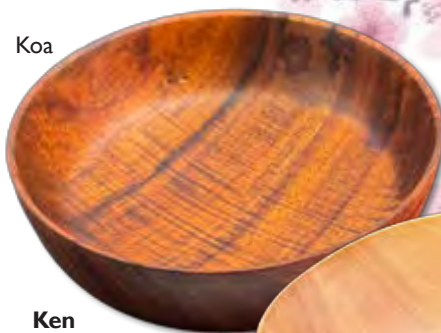
Chuck Burke, Ethan Green & Ed White

Contact Ed White – [eswhitearts84@outlook.com](mailto:eswhitearts84@outlook.com) to join the SPSW Westend mailing list

Ethan Green  
Garry Oak



Koa



Ken  
Richardson



Madrone

Wayne Wells  
Acacia



## Dust Collector Maintenance

Not all of us have a dust collector. And we don't often give thought to maintaining the dust filter on top. These canisters often load up (become clogged) with fine sawdust which inhibits the passage of air through them causing a lessening of their suction capacity. Remember when your DC was new, how hard it sucked and how well it picked up waste? How to tell if your canister needs some attention: Press on the lower bags while it is running, and if the bag is hard, resistant to being pushed in, it likely needs maintenance. What follows is my recipe for recovering much of the filter's capacity to filter air.

Tools: A shop vac with brush attachment or a compressed air hose (I used both but one will be enough). A large screwdriver (maybe). A new bottom bag (optional).



When I began, my lower bag was about 2/3 full. Leaving the lower bag in place, I removed the canister from the top. Pretty simple job but may require two people and perhaps some prying to get it loosened and then removed. I set my canister upside down but raised off the floor to accommodate the agitator handle.

Place something on top of the inverted canister to prevent fine sawdust from blowing around your shop (Or in my case all over my wife's car); I used a trash can lid. Using the compressed air nozzle, and blowing from the outside to dislodge fine sawdust from the inside. This took some time because the tank of my air compressor needed to refill after fifteen or twenty seconds of blowing. I moved the nozzle back and forth, then up and down. I experimented

with the shop vac in blow mode and learned that it works.

Next I put on the brush attachment. Before proceeding let me save some trouble: Switch the shop vac back to suck; ask me how I know. Using the brush up and down, the bristles loosen material which then gets vacuumed up. Upon completion here, I removed the brush attachment and sucked up the sawdust that had accumulated in the bottom (top).

When I began this project I considered removing my fairly full lower bag but it occurred to me that the weight, considering it ballast, would help keep the machine upright, and reduce its tendency to roll around. I'm glad I left it until last because that helped when re-placing the canister. I usually reuse my lower bags about a dozen times before replacing them but since I had just completed the full maintenance routine, I gave it a new bag. After testing it to make sure it all still worked, I put it back where it lives.



### Additional comments:

\* This can be a pretty messy job so consider not doing it right before church, or a wedding. Think about wearing a dust mask.

\* Collecting waste from extremely sticky materials such as sawdust from very pitchy fir burls will hasten the permanent loading up of the filter media. There's no cure for this besides replacement. Depending on their use they need to be replaced periodically anyway.

\* Some discard their lower bags when they're full. I believe this is wasteful. It's a simple matter to transfer waste from the clear bag to a bag for disposal allowing re-use of the clear bag. I get about a dozen emptyings before I replace them. A 5-pack of my bags at 20"x43" costs about \$25 online.

*Ethan Green*



**April President's Challenge Entries**

(Note: Due to not having names on most of the photos, no names will be listed here)  
The April President's challenge was to make a top.  
Tops were tested for spinability (is that a word?) as well as appearance.



...and the winner! Drum roll please... Ramon Lyn



Banksia, Padauk & Maple

Travis Miller

Resin, Padauk & Maple



JoAnn Amberg  
European Beech

Don Norton  
Maple



**Meeting Location and Time\*\*:**

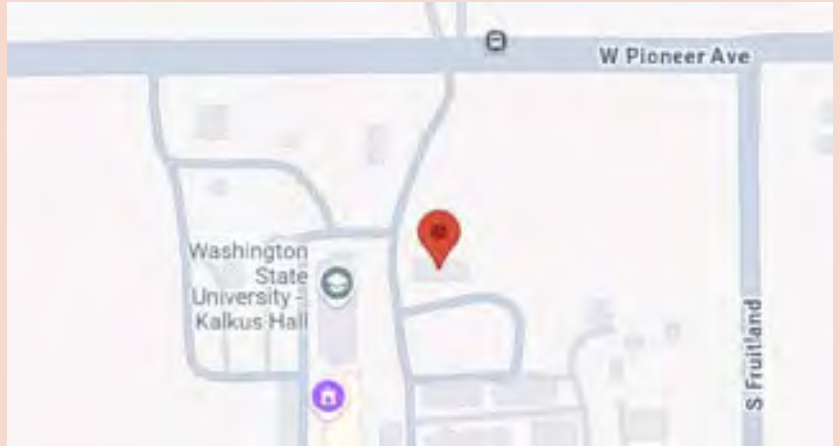
WSU Extension in the D.F.Allmendinger Center  
2607 W Pioneer Ave, Puyallup WA 98371

**Social Hour** 5:30 – 6:30 pm (bring your show-and-tell, President’s Challenge or just mingle)

**Meeting Starts** 6:30 – 7:00 pm  
(Announcements, show-and-tell, President’s Challenge, etc.)

**Demonstration** 7:00 – 8:30

\*\*If you would like to help with the set up or clean up, please plan to come at 5 or stay after and help to clean up.



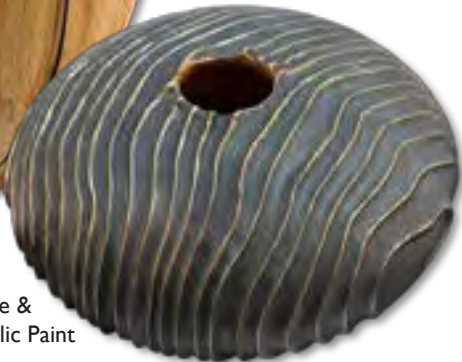
Alder



Doug Thomson  
Eastern Red Cedar



Dave Best



Maple &  
Acrylic Paint



Josiah Rau  
Madrone



SPSW is a chapter of the American Association of Woodturners (AAW). Many of our members are just members of the chapter but not the American Association of Woodturners (AAW).

**The AAW offers an Affiliate Membership (free 3-month trial membership.)** The free membership allows access to all online publications like The American Woodturner, Woodturning FUNDamentals magazine, and AAW e-newsletters.

Visit the website [www.woodturner.org](http://www.woodturner.org) (or click the link if you are an email newsletter subscriber) and look under Membership then Join Today. Scroll to the bottom of the page. The above hyperlink will also take you there. For those who prefer to do it by phone, call 877-595-9094 M-F 8:30 to 4:30 Central time.

# VOLUNTEER OPPORTUNITIES

## Show and Tell

At the meetings, we could use a hand with our show and tell, getting items in front of the cameras and also making sure that during our demonstrations that a microphone is available to audience members for questions so all can hear, even those at home.

## Store



We would like to have a few more volunteers to be able to fill in when needed for the Club Store so it isn't too much for John. If you are familiar with how the Square card reader works is a bonus for us all!

## AV Assistance

We could use a couple of extra hands with our AV/Zoom with Ramon Lyn. Set up and take down takes a lot of time for one person causing us to start a little late each month and getting out of the building after our meetings. Ramon is happy to train you on set up and take down to store our cameras and equipment.



## Support the Businesses that Support SPSW

*(Image is a link to the site)*

Selling Premium  
Hardwood Lumber



10% Discount for SPSW  
cardholders



A Family Owned  
Business Since 1996



Woodcraft of Seattle



10% Discount for SPSW cardholders

Expert Industrial  
Sharpening Solutions for  
Every Blade



5% Discount for  
SPSW cardholders

Title	Name	Phone	Email
President	Kathy Garlick	253-204-9278	<a href="mailto:president@spswoodturners.org">president@spswoodturners.org</a>
Vice President / Program Chair	Ed White	206-218-3797	<a href="mailto:programs@spswoodturners.org">programs@spswoodturners.org</a>
Secretary	Mark Gilbert		<a href="mailto:secretary@spswoodturners.org">secretary@spswoodturners.org</a>
Treasurer	Jim Funk		<a href="mailto:treasurer@spswoodturners.org">treasurer@spswoodturners.org</a>
Newsletter	Suzette Edwards	253-341-7855	<a href="mailto:newsletter@spswoodturners.org">newsletter@spswoodturners.org</a>
Membership	Brandi Lowrance	253-219-5682	<a href="mailto:membership@spswoodturners.org">membership@spswoodturners.org</a>
Webmaster & Social Media	TIm Spaulding		<a href="mailto:webmaster@spswoodturners.org">webmaster@spswoodturners.org</a>
Store Sales	John Howard	253-370-5704	<a href="mailto:storesales@spswoodturners.org">storesales@spswoodturners.org</a>
Industry Coordinator	Ethan Green	360-801-1299	<a href="mailto:industry@spswoodturners.org">industry@spswoodturners.org</a>
AV Coordinator & Zoom Tech	Ramon Lyn	904-993-8106	<a href="mailto:avcoord@spswoodturners.org">avcoord@spswoodturners.org</a> <a href="mailto:tech@spswoodturners.org">tech@spswoodturners.org</a>
Wood Rat	Devin Garlick	253-457-0633	<a href="mailto:wood_rat@spswoodturners.org">wood_rat@spswoodturners.org</a>
Mentorship	Michael Poirier		<a href="mailto:mentorship@spswoodturners.org">mentorship@spswoodturners.org</a>
Director at Large: AAW Liason	Kent Horton	206-909-2701	<a href="mailto:aawdirector@spswoodturners.org">aawdirector@spswoodturners.org</a>
Director at Large	Pat McCart	253-337-8986	<a href="mailto:atlarge@spswoodturners.org">atlarge@spswoodturners.org</a>
Director at Large	Jim Higgins	206-870-4107	<a href="mailto:atlarge2@spswoodturners.org">atlarge2@spswoodturners.org</a>



Looking for some inspiration?  
Check out the  
[SPSW YouTube Channel](#)

## 2026 Membership Renewals



If you enjoy SPSW please take the time to renew your membership.

**The dues for 2026 are only \$55 for the entire year and that is for your whole family.**

Brandi Lowrance, our Director of Membership, is taking dues for the 2026 year. I hope each of you will join us again for another event-filled year. I would like to encourage everyone to get your 2026 dues paid as soon as possible.

Your dues are what enable us to rent our great meeting facility, provide equipment like the new multiple camera system used to enable members to better view demonstrations in person and on-line, and purchase the tools and equipment we need to run demonstrations and sawdust sessions.

You can either pay your dues at the meeting, or an even easier method is to do it online through the members only tab on the [SPSW website](#).

**We are now collecting dues for 2026.** Dues for individuals or for the whole family are \$55/year. For new members, the dues are prorated from the month you join. We accept cash, check, Visa®, MasterCard®, American Express®, Discover® or debit card.

This is still one of the best deals around. For just \$55 you get a monthly meeting featuring top notch presenters, an avenue to display your talents, and a forum to seek advice and ask questions. You have access to a group of mentors who can help you improve your skills.

Also, there is a monthly “open turning session” (our Sawdust Sessions) on the Saturday following the meeting. Use the membership application below and pay at the meeting or mail it to the address on membership form.

We now also have the option for you to join, renew, or just donate. We are a registered 501 (c)(3) non-profit organization. You can pay at the meeting, or on-line! Just go to our website ([www.spswoodturners.org](http://www.spswoodturners.org)), fill out the form, and pay at that time.

**AAW membership is separate from membership in the SPSW Chapter. Now is also a good time to sign up for the [American Association of Wood turners \(AAW\)](#). Annual memberships in the AAW operate on an yearly anniversary cycle, whereby your membership will start with your join date and continue until the same date the following year.**

If your level of AAW membership includes a printed copy of the American Woodturners journal, you will receive six issues starting with the issue published after you join or renew.

## SPSW Membership Application

### Membership Year 2026

- New Membership  
 Renewal

Name (Please Print) \_\_\_\_\_

Address: \_\_\_\_\_

City: \_\_\_\_\_ State: \_\_\_\_\_ Zip: \_\_\_\_\_

Phone: \_\_\_\_\_ Email: \_\_\_\_\_

How long have you been turning? \_\_\_\_\_ AAW Member?: Yes / No

- Areas of Interest:**  Spindle Turning  Bowls  Vases  Segmented turning  Tool making  
 Tool Sharpening  Pen Making  Other

#### Membership Dues \$55

**\$55 Family Membership** includes: Chapter & Zoom monthly meetings, Sawdust & Mentoring sessions, free focused clinics, members only website access, annual picnic & auction, holiday dinner & prizes.

**\$55 Gift of a Family Membership**

If Paying by mail, make checks payable to South Puget Sound Woodturners or SPSW and mail this form to:

**South Puget Sound Woodturners**  
**PO BOX 1792**  
**Milton WA 98354**

Office Use  
Only:

Payment Type:

- Check  
 Cash  
 Credit

### Store Product List

Brand	Description	Unit Size	Price
<b>Adhesives</b>			
Starbond	Accelerator	8 oz.	13
	Accelerator Pump	2 oz.	9
	Brown Medium CA	2 oz.	16
	Instaset Accelerator	2 oz.	9
	Medium Black 2 oz. Kit	2 oz.	16
	Medium, Kit	Ea	10
	Thick Kit 2 oz.	Ea	10
	Thin, kit	2 oz.	10
	Thin, Set	16 oz.	35
Bob Smith Industries	20 Minute Cure Epoxy Resin	13 oz. kit	12
	Maxi-Cure Extra Thick, Gap Filling	2 oz.	9
	Maxi-Cure Medium, Gap Filling	2 oz.	9
Insta-Set	Insta-Set Accelerator, Pump Spray	2 oz.	10
<b>Adhesive Accessories</b>			
	CA Applicator, Fine	3 qty	1
	CA Extra Fine Glue Tips	3 count	1
	CA Replacement Glue Caps	Ea	1
	Extender Tips	Qty. 3	1
	Super Solvent	2 oz	7
	Superglue Pipettes (Eye Droppers)	Qty 3	1
	Tubing	2ft. .	1
<b>Sanding</b>			
Woodturners Wonders	Flexible Sanding Pad Woodturners Wonders	Ea	8
	Green Remover Smoother (2" oversized)	25 Pack	4
	Green Wave Mylar Backed Mylar Backed Sanding Disks (2" oversized)	25 Pack	6
	Green Wave Mylar Backed Sanding Disks (3" Oversized)	25 Pack	7
	Intermittent Hook & Loop Pad, 2-inch	Ea	4
	Intermittent Hook & Loop Pad, 3-inch	Ea	5
	Mandrels, Sanding 2"	Ea	7
	Wonder Weave 2" Disc Kit, Low Grits 60 - 600	40 Discs	9
	Wonder Weave 3" Disc Kit, High Grits (800-3000)	25 Pack	5
	Wonder Weave 3" Disc Kit, Low Grits (60-600) 60 - 600	40 Discs	10
	Wonder Weave 3"x 8" Sand Paper 60-600 grits, assortment	Pack	5
Uneeda NW	Ekablue Sand Paper From Sweden, 120 - 360 grit	2 sheets	1
	EkaMant Blue Sanding Discs 2" 80 - 400 grit	10 Discs	1
	EkaMant Blue Sanding Discs 3" 80 - 400 grit	10 Discs	4
	Emory Cloth 8.5"x11" Sheet 120, 180, 220, 320	2 sheets	1
	Wet/Dry 8.5"x11" Sandpaper 400 or 600 grit	4 Pack	3
	Mandrels, Sanding 3"	Ea	10
Ultra Flex	Micro Mesh Wet/Dry 3"X6" Sheets	12 Pack	24
	Micro Mesh Wet/Dry3"X6" Sheets	6 pack	13

continued next page

store product list continued...

Brand	Description	Unit Size	Price
Finishes and Finishing Materials			
Doctor's Woodshop	Cutting Board Wax	4 oz	12
	High Build Friction Polish	Pint	18
	Pens Plus Finish	Pint	18
	Walnut Oil	Ea	14
	Walnut Oil / Carnuba / Shellac	Pint	18
	Walnut Oil / Wax	Pint	14
	Walnut Oil Microcrystal Paste Wax	Jar	10
	Walnut Oil Microcrystalline Bowl Finish	Pint	14
GluBoost	Fill n Finish Kit	ea	43
Lathe and Turning Accessories			
	Nomar Grinder Angle Gauge	Ea	5
	Anchor Seal w/Can	1 Gallon	24
	Anchor Seal w/o Can	1 Gallon	20
	E-Z Lock Inserts QTY 10	Pkg	5
	E-Z Lock Inserts QTY 25	Pkg	13
Multi-Marketing Group	DynaGlide Tool Lube	Ea	16
	Index Wheel for 3/4", 1" or 1-1/4" spindle	Ea	20



1. **The Zoom meeting invitation is only sent to active members.** So, if you have not paid your dues since October 2025, you will need to go to the members tab on the [SPSW website](https://www.spsw.org) (spswoodturners.org) and renew your membership. Please note that it would normally cost more for just one of these demonstrations than your SPSW dues for the entire year.
2. Before the scheduled meeting, you need to go to zoom.com and download the free “Zoom Meetings” app. The Zoom download is quick, easy, and free!
3. **Information and Invitation Delivery Schedule:**
  - a. **The Wednesday the week before the meeting** – The Zoom Meeting Invitation will go out to our active member’s distribution list. (This is if we get the link by then)
    - i This invitation contains a link that appears in blue letters. Just click it to join the remote demo on Thursday.
    - ii Please save this where you can find it.
      1. If you don’t see the invitation(s) in your inbox, then please check your “junk” or “spam” folder. If you get our newsletters, the meeting invitation should come right into your inbox.
      2. If you did NOT get the email, the link will be posted on the SPSW website under For Members/Zoom Meeting Link
  - b. **The Saturday before the meeting.** – A reminder will be e-mailed to our active member’s distribution list.
  - c. **The day of the meeting** - Log into the meeting by 6:30pm
    - i The demo will start at 7:00pm
    - ii When you click on the link, you will be asked if you want to join with video and audio. Answer “yes” to both, then you will enter a virtual waiting room. Wait just a few seconds and one of the co-hosts will admit you into the actual meeting.
    - iii **Note:** If you have previously downloaded the app, you may see an update is available. If you see it, please update your app. Zoom is making frequent changes to the program to strengthen security.
    - iv Devices used to view the demo can be smartphones, tablet computers, laptops, etc. To fully participate, the device needs to have audio and a camera.