



## Chips & Shavings

March 2017

**Inside this issue:**

- President's Letter 2
- SPSW Calendar 3
- President's Challenge 4
- Pictures from February 5
- Announcements 6
- Membership 7
- Sponsors 8

### March — Mini Symposium

This month we are having our first 2017 Mini Symposium. These events are special in that they offer the opportunity to observe several different aspects of turning and decoration at one event. They are also special in that the demonstrations are performed by our own members. This club is very proud to have members of all skill levels. We can all learn something new and woodturners are, in large, well known for their willingness to share their secrets with all.

There will be no Show and Tell this month but feel free to bring your projects for display.

**Roy Lane**  
**Harry Lincoln**  
**Craig Chatterton**  
**Carol Zandell**  
**AlisaBeth Nash**  
**Bob Sievers**  
**Stephany Lane**

**Hollow Form**  
**Pepper Mill**  
**Cosmic Cloud**  
**Whimsical Turnings**  
**Pen turning**  
**Rose Engine**  
**Pyrography (Wood Burning Designs)**

Contact Information

South Puget Sound Woodturners  
PO Box 1792  
Milton, WA 98354  
[www.spswoodturners.org](http://www.spswoodturners.org)

### Annual Dues Reminder

If you have not already done so, please get this year's dues in as soon as possible. You can find a renewal form in this newsletter, or on our web site.

### South Puget Sound Woodturners 2017 Board

**President: Pat McCart**  
(253) 927-5463  
SPSWPres@gmail.com

**V. President: David Best**  
(360) 893-2210  
Bompadaavid@gmail.com

**Secretary: Fred Abeles**  
(253) 631-2534  
Fredabe@hotmail.com

**Treasurer: Dan Dickey**  
D2daddio@gmail.com

**Membership: AlisaBeth Nash**  
(253) 318-9933  
fairyedtreasure@gmail.com

**Webmaster: Tim Spaulding**  
(253) 307-6641  
timsp@thewiredcity.net

**Librarian: John Jacobs**  
(253) 581-0290  
hisanonym@yahoo.com

**Industry Coordinator: Open**

**Inventory Control:**  
**Ken & Polly Light**  
(253) 740-4733  
kenithlight@gmail.com

**Member At Large: John Howard**  
jhowardcdt@comcast.net



March 2017

Page 2

## Letter from the President

A lovely and lonely crocus stuck out its head out from under a fresh blanket of snow in my front flower bed, signaling the promise that spring is just around the corner.

March 16<sup>th</sup> will be our first mini symposium of 2017. This year we will be adding something new. We will be setting up a **“Swap or sell”** table. Here is your chance to swap or sell some of the tools that you never use or have too many of. How about that tool that you could never get the hang of? Why not sell it to another member that has been looking to buy just that tool.

Dave Best has been hard at work filling up our demonstrator calendar with some amazing talent. Mark your calendars for our May 18<sup>th</sup> meeting when Eric Lofstrom returns to dazzle us with his turning skills. Eric will also be doing an all-day class/demo on May 20<sup>th</sup>. Cost is \$30 and I can guarantee that you will get more than your monies worth.

April’s meeting will mark the next chapter to the highly acclaimed and wildly anticipated segment to the “Presidents challenge” This time we will be attempting a bird house. You can go to our website @ [spswturners.org](http://spswturners.org) for more details. Come to the sawdust session on March 18<sup>th</sup> and get some tips on how to turn your bird house.

It is with a heavy heart and great sadness that I inform everyone that long time Board member and all-around great guy Jim Cotter has passed away. Jim passed at his home on February 27<sup>th</sup> surrounded by family. I will deeply miss his wise counsel and warm friendship. The SPSW has lost a remarkable member that made the club better and stronger.

Be safe, have fun and make shavings. Pat



## Event Calendar

<p>January 2017</p> <p>19<sup>th</sup>: Membership Mtg <b>Jay Shepard</b></p> <p>21<sup>st</sup>: Sawdust Session</p> <p>31<sup>st</sup>: Board Mtg Pat McCart's</p>	<p>February 2017</p> <p>16<sup>th</sup>: Membership Mtg <b>Carl Jacobson</b></p> <p>18<sup>th</sup>: Sawdust Session</p> <p>28<sup>th</sup>: Board Mtg Pat McCart's</p>	<p>March 2017</p> <p>16<sup>th</sup>: Membership Mtg <b>Mini Symposium</b></p> <p>18<sup>th</sup>: Sawdust Session</p> <p>25<sup>th</sup>: Board Mtg Pat McCart's</p>	<p>April 2017</p> <p>20<sup>th</sup>: Membership Mtg <b>Mike Poirier</b></p> <p>22<sup>nd</sup>: Sawdust Session</p> <p>25<sup>th</sup>: Board Mtg Pat McCart's</p>
<p>May 2017</p> <p>18<sup>th</sup>: Membership Mtg <b>Eric Lofstrom</b></p> <p>20<sup>st</sup>: Eric Lofstrom Turning Class \$30 Nancy Sweazey's shop</p>	<p>June 2017</p> <p>15<sup>th</sup>: Membership Mtg <b>Fred Abeles</b></p> <p>17<sup>th</sup>: Nancy Sweazey shop clean up</p> <p>27<sup>th</sup>: Board Mtg Pat McCart's</p>	<p>July 2017</p> <p>20<sup>th</sup>: Membership Mtg <b>Panel Discussion</b> (No Sawdust Session)</p> <p>23<sup>rd</sup>: Wood Auction (Sunday)</p> <p>25<sup>th</sup>: Board Mtg Pat McCart's</p>	<p>August 2017</p> <p>17<sup>th</sup>: Membership Mtg <b>TBD</b></p> <p>No Sawdust Session</p> <p>29<sup>th</sup>: Board Meeting Pat McCart's</p>
<p>September 2017</p> <p>21<sup>st</sup>: Membership Mtg <b>TBD</b></p> <p>23<sup>rd</sup>: Sawdust Session</p> <p>26<sup>th</sup>: Board Meeting Pat McCart's</p>	<p>October 2017</p> <p>19<sup>th</sup>: Membership Mtg <b>TBD</b></p> <p>21<sup>st</sup>: Sawdust Session</p> <p>31<sup>st</sup>: Board Meeting Pat McCart's</p>	<p>November 2017</p> <p>16<sup>th</sup>: Membership Mtg <b>TBD</b></p> <p>18<sup>th</sup>: Sawdust Session</p> <p>28<sup>th</sup>: Board Meeting Pat McCart's</p>	<p>December 2017</p> <p>20<sup>th</sup>: <b>Holiday Mtg</b></p> <p>no Sawdust Session</p> <p>Jan 2<sup>nd</sup>: Board Mtg Pat McCart's</p>

\* Sawdust Sessions: Bring safety equipment (eyewear, hearing, etc), bring a lunch, bring your tools if you have them

### The Month at a Glance

- Membership Meeting: March 16<sup>th</sup> (Thursday) 6:00—9:00 pm at Fife Senior Center
- Sawdust Session: March 18<sup>th</sup> (Saturday) 9:00 am –3:00 pm Nancy Sweazey's shop
- Board Meeting: March 28<sup>th</sup> (Tuesday) 7:00—8:30 pm at Pat McCart's, members welcome (RSVP to Pat McCart)



## President's 2017 Challenges

We are starting a new feature for SPSW general meetings in 2017, a **President's Challenge**, which will be open to all members who wish to participate. The purpose of the challenge is to take you out of your 'comfort zone' and encourage you to learn new techniques, the use of different tools, and encourage problem solving. The idea is to make the item (s) which meet the requirements listed in the chart below and bring it or them for Show and Tell at the specified monthly meeting. Please note some items set a test parameter.

Just bring your completed piece to the general meeting on the 3rd Thursday of the listed month. Each "challenge" allows you freedom of expression and there is no expectation regarding what you turn, so long as it meets the criteria listed.

Items will be judged by an impartial panel, based on the description in the requirements section. All participants will get a round of applause and the satisfaction of having acquired some new skill and knowledge. Each entrant will get a Participation Award ticket for the annual PA drawing in December. The winner will get 2 tickets.

The bi-monthly President's Challenge schedule is as follows:

<b>Meeting</b>	<b>Challenge</b>	<b>Requirements to be met</b>
February 16 <sup>th</sup>	<b>Sphere</b>	Challenge completed
April 20 <sup>th</sup>	<b>Birdhouse</b>	Any size. No perch. Does not need to be functional and can be ornamental. All parts need to be turned. No test. Originality is the criterion for the judging. Your choice of wood
June 15 <sup>th</sup>	<b>3 Tops</b>	Any size. Must be embellished using the method of your choice. Test will be that it spins without being unbalanced both right-side up and upside down. The embellishment must compliment the piece and each of the 3 tops must be of the same dimensions. Your choice of wood(s).
August 17 <sup>th</sup>	<b>Footed natural edged vessel</b>	Any size. Wall thickness at rim must not be more than 3/8ths of an inch thick and the edged vessel rest of the bowl must have a consistent wall thickness dimension which may differ from edged vessel rest of the bowl must have a consistent wall thickness dimension which may differ from the rim. The footed base may have 3 or more feet and the piece must stand with the rim parallel to the surface on which the piece sits No test to this. Originality, adherence to the requirements, style and effectiveness of footing, and amount of natural edge bark are the judging criteria. Your Choice of wood.
October 19 <sup>th</sup>	<b>Lidded box</b>	Any size or style, May be single box or stacked boxes, Requirement is that the piece must be a box with a lid. Test is how well the lid fits (not how tight the fit is). Extra points for innovative design, integrated knob (turned from the same piece of wood and not added onto the lid), threading the box and lid, originality, and overall aesthetic appeal. Your choice of wood(s).
December 21 <sup>st</sup>	<b>Holiday ornament</b>	Be creative. Do something you have not done before using at least 2 species of wood. No test to this. Judging criteria include lightness (weight), originality, and design balance. Your choice of woods.



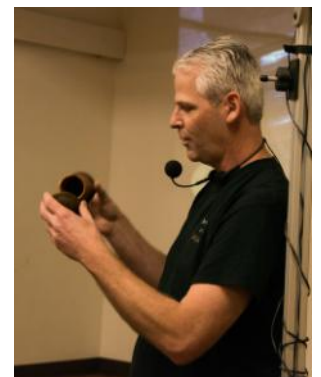
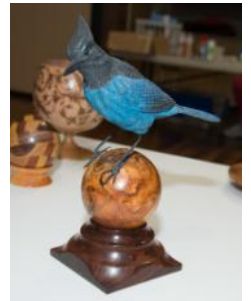


### Photo's from February Meeting

Photos by Fred Abeles. For additional club photos by Fred please visit his web site.

[South Puget Sound Woodturners Newest Photos](http://South Puget Sound Woodturners Newest Photos)

<https://avoided-artist.smugmug.com/Woodworking/South-Puget-Sound-Woodturners>





## Announcements

**Are you a new member or visiting our club for the first time?**

We are glad you are here and want to welcome you to our general membership meeting. **Please introduce yourself to an officer or mentor so we can welcome you.**

**Need help with a splintering question? Contact one of our "MENTORS".** These club members have stepped up and would like to use their knowledge and expertise to help other turners with their questions. If these turners aren't able to answer your question, they will do their best to help you find a solution.

### SPSW Mentors

• Hal Johnson (425) 788-2221	• Pat McCart (253) 370-8986
• Eric Lofstrom (253) 320-4788	• Dave Schweitzer (360) 432-9509
• Jack Wayne (425) 488-9561	• Bob Sievers (360) 897-8427

- **Seattle AAW Membership Meeting** - 2nd Thursday of each month, VFW Hall, 4330 148th Ave NE, Redmond, WA 98052
  - **Olympian AAW Membership Meeting** - 4th Thursday of each month, Thurston County Fairgrounds
  - **Oregon Woodturning Symposium** - March 17-19, 2017, Linn County Expo Center, Albany, OR 97322 [www.lcfairexpo.com](http://www.lcfairexpo.com)
- \* The South Puget Sound Woodturners now has a club policy for harvesting wood as a club function. We also have a Wood Rat - Jerre Griffin. [jgriffin@centurytel.net](mailto:jgriffin@centurytel.net)

- **More Woodturning Magazine**

The magazine for turners. Published electronically 12 times a year by Dennis Daudelin. One yr: \$25.00; Two yrs: \$50.00; Three yrs \$75.00. Effective immediately More Woodturning is published only electronically. Lots of great information for your browsing pleasure. [www.morewoodturningmagazine.com](http://www.morewoodturningmagazine.com)

**Lathe for Sale**, Quality Titan 4000 Lathe: click this link for full information:  
[Sale Information](#)

The lathe is a Titan 400 Magma Black line with a swing over the bed of 15 3/4" (31 1/2" diameter turning capacity) and between centers of about 51". Note the lathe was built and shipped from Austria so the components are metric\*. For more information on this line of lathes you can go to :

[Woodturning Lathes Magma Black Line TITAN](#)



## Membership

We are collecting 2017 dues. Dues for the whole family are \$35. We accept cash, check, credit card, and PayPal. This is still one of the best deals around. For this, you get a monthly meeting featuring top notch presenters, an avenue to display your talents, and a forum to seek advice and ask questions. You have access to a group of mentors who can help you improve your skills.

Also, there is a monthly open turning session (Sawdust Session) on the Saturday following the meeting. Use the membership application below or pay at the meeting.

**And now a new way to pay. Go to our website, fill out the form, and pay with PayPal.**

We now also have tile option for you to join, renew, purchase supplies or just donate (we are a registered 501 (c)(3) non-profits using Square®. You can use your Visa®, MasterCard®, American Express®, Discover® or debit card.

Now is also a good time to sign up for the American Association of Wood turners (AAW). Annual memberships in the AAW operate on an anniversary cycle, whereby your membership will start with your join date and continue for one year.

If your level of membership includes a printed copy of the American Woodturners journal, you will receive six issues starting with the issue published after your join or renew date.

See <http://www.woodtumer.org/org/mbrship/index.htm> for the various levels of membership.

---

South Puget Sound Woodturners (SPSW)  
Membership Application

Name: \_\_\_\_\_

Address: \_\_\_\_\_

City: \_\_\_\_\_ State: \_\_\_\_\_ Zip: \_\_\_\_\_

Telephone Number: \_\_\_\_\_ Email Address: \_\_\_\_\_

How would like to receive the newsletter? Email: \_\_\_\_\_ US Mail: \_\_\_\_\_

How long have you been turning? \_\_\_\_\_ AAW Member? \_\_\_\_\_

Interest: Spindle Turning \_\_\_\_\_ Bowls \_\_\_\_\_ Vases \_\_\_\_\_ Segmented turning \_\_\_\_\_ Tool making \_\_\_\_\_

Tool sharpening \_\_\_\_\_ other \_\_\_\_\_

Membership dues for South Puget Sound Woodturners are \$35.00 annually. Please make your check payable to South Puget Sound Woodturners (or SPSW) and mail this form to:




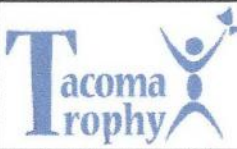

South Puget Sound Woodturners  
PO Box 1792  
Milton, WA 98354





**Our Sponsors**

<p>Tukwila 206-2474-9161</p>  <p><b>ROCKLER</b> WOODWORKING AND HARDWARE</p>
<p><b>CRAFT SUPPLIES USA</b> — THE WOODTURNERS CATALOG —</p> <p>(800) 551-8876 <a href="http://www.woodturnerscatalog.com">http://www.woodturnerscatalog.com</a></p>
<p><b>Equipment Sales &amp; Surplus</b> 1801 West Valley Hwy N Auburn, WA 98001-1605</p>
 <p>(800) 683-8876      <a href="http://packardwoodworks.com">packardwoodworks.com</a></p>
<p><b>Treeline</b> 1221 East 1120 South Provo, UT 84606    (800) 598-2743 <a href="http://www.treelineusa.com">http://www.treelineusa.com</a></p>
<p><b>Klingspor's Woodworking</b> P.O. Box 3737    Hickory, NC 28603-3737 (800)228-0000</p>
 <p><b>D-WAY TOOLS</b></p> <p><a href="http://www.d-waytools.com">www.d-waytools.com</a>      360-432-9509</p>
 <p><b>more WOODTURNING</b></p> <p><a href="http://www.morewoodturning.net">www.morewoodturning.net</a></p>
<p><b>GD Design, LLC</b> Custom Tool and Machining Jerry Little 206-242-0337    206-572-6568      <a href="mailto:solidaxle@comcast.net">solidaxle@comcast.net</a></p>
<p><b>Woodline USA</b> 1-800-472-6950 Use code SPSWT at checkout</p>

<p><b>Beginning and advanced woodturning classes.</b> Call Ed Quesnell at 206-406-5766, Tacoma, WA.</p>
<p><b>Tropical Exotic Hardwoods</b> Of Latin America Mitch Talcove (760) 434-3030</p>
 <p>Seattle (206) 767-6394    <a href="http://woodcraft.com">http://woodcraft.com</a></p>
 <p>Joan &amp; John Schmit      253-891-9413</p>
 <p>(800) 547-5461</p>
<p><b>CROSSCUT HARDWOODS</b> Seattle (206) 623-0334</p>
 <p>DJ &amp; Judi Brown (253) 302-5566 <b>Laser Engraving</b></p>
<p><b>Woodturning classes – Satisfaction guaranteed.</b> Call Larry Miller 360-412-1583, Olympia, Washington</p>
 <p><b>ToolsbyCrabtree</b> <a href="http://www.toolsbycrabtree.com/">http://www.toolsbycrabtree.com/</a>      253- 273-2147</p>

In order to receive club discounts from some of our mail order vendors we are required to provide them with an up-to-date membership list. This is so to verify that you are a member in good standing with the club and therefore entitled to the discount they provide us. If you would prefer not to be included on the list please email [StanGardnerstangard@comcast.net](mailto:StanGardnerstangard@comcast.net).