



Chips & Shavings

SOUTH PUGET SOUND
WOODTURNERS
(SPSW)

May 17, 2009



Top Hat by Bob Seivers

See page 2 for details
(Photograph by Fred Abeles)

Contents:

President's Letter	Pg. 2
SPSW Contacts	Pg. 1
SPSW Calendar	Pg. 3
Monthly Demonstration	Pg. 4
Meeting Pictures	Pg. 5
Mentor Contacts	Pg. 7
Announcements	Pg. 7
Classifieds	Pg. 9
Woodworking Supplies	Pg. 10
Vendors	Pg. 11

SPSW Contacts:

President: Pat McCart
(253) 370-8986
jmccart5464@msn.com

V. President: Eric Lofstrom
(253) 320-4788
ellofstrom@msn.com

Secretary: Tom Hunt
(253) 854-3917
tomjhunt@att.net

Treasurer: Paul Crabtree
(253) 273-2147
crabtreepaul@yahoo.com

Membership: Fred Reinke
(253) 246-9953
reinkefnd@comcast.net

Editor: Jeff Marsden
(206) 347-3521
jeffmarsden@me.com

Sawdust Sessions:
Jim Cotter (Coordinator)
(206) 954-9548
cotterjimmy@hotmail.com

Program Director: Jim Cotter
(206) 954-9548
cotterjimmy@hotmail.com

Industry Coordinator:
Bob Mower
(253) 846-8277
zeebob33@gmail.com



President's Letter & Meet the Turner



A great big Thank You!

When I first took on the position as President of the SPSW, I eagerly anticipated many feel good moments with fellow turners who were also discovering the joys that come from free flowing ribbons of wood shavings. Little did I realize that the high water mark for me would not come at the lathe. Nor would it come by winning some award or from making that perfect piece. How was I to know that my new gold standard, bench mark, would come in the early afternoon sunshine at the end of a very productive day, spent with 30 or so of my fellow turners and friends uniting for a spring cleanup at Nancy Sweazey's farm and shop.

The heartfelt moment came when Nancy and her radiant smile looked at me and said, "Thank you Pat, this is the nicest thing a group of people has ever done for me. The farm has never looked this good."

To each and every person that was able to come out and spend part of your Saturday working with us, whether a half an hour or all day, Thank you! Your diligent efforts and noticeable accomplishments are greatly appreciated and I am proud to be part of a group like this.

See you on the 21st, and remember be safe, make chips and have fun!

-Pat McCart, SPSW



Tea anyone? This month's cover picture is of a wooden hat made by our own resident mad hatter Bob Seivers. Bob was inspired to make the hat after attending the Johannus Michelson demo back in Novemeber 08.

The hat is made of Madrone Burl and is finished with Minwax wipe-on Polyurethane.

Bob is a prolific turner and is a consistent contributor to the Show and Tell segment of our monthly meetings.



Participation Tickets – If you participate in **Show & Tell**, **Wood Donation**, or **Set-Up/Clean-Up**, make sure to fill out your **Participation Tickets**.

THIS MONTH AT A GLANCE

- **MEMBERSHIP MTG - May. 21st** (Thur.), 7:00-9:00 pm at Fife Senior Center
- **SAWDUST SESSION - May. 23rd @ Bob Sweazey's Shop**
- **BOARD MTG. - May. 26th** (Tues.), 7:00-8:30 pm at Les Johnson's, members welcome (RSVP to Pat McCart)

SPSW CALENDAR – 2009 At A Glance

Jan. 15 Membership Mtg:-
Fred Holder - Making Chinese Balls
17 Sawdust Session at Pat McCart's
27 Board Mtg. - Les Johnson's

Feb. 19 Membership Mtg:-
Malcolm Tibbets Segmented turning
19 **Special all day class with Malcolm Tibbets - Segmented Turning**
21 Sawdust Session
24 Board Mtg. - Les Johnson's

Mar. 19 Membership Mtg:-
2008 Annual Holiday meeting
21 Sawdust Session
31 Board Mtg. - Les Johnson's

Apr. 16 Membership Mtg:- **Dave Schweitzer - Wooden Bowls & Decorative Effects**
18 Sawdust Session at Bob Sweazey's
28 Board Mtg. - Les Johnson's

May 21 Membership Mtg:- **Dan Ackerman - Turned Boxes**
23 Sawdust Session
26 Board Mtg. - Les Johnson's

June 18 Membership Mtg:-
Summer Symposium
20 Sawdust Session
30 Board Mtg. - Les Johnson's

July 16 Membership Mtg:-
TBD
18th Picnic / Wood Auction
28 Board Mtg. - Les Johnson's

Aug. 20 Membership Mtg:-
TBD
22 Sawdust Session
25 Board Mtg. - Les Johnson's

Sept. 17 Membership Mtg:-
TBD
19 Sawdust Session
25 Board Mtg. - Les Johnson's

Oct. 15 Membership Mtg:-
Fall Symposium
17 Sawdust Session
27 Board Mtg. - Les Johnson's

Nov. 19 Membership Mtg:-
TBD
21 Sawdust Session
24 Board Mtg. - Les Johnson's

Dec. 18 Membership Mtg:-
Annual Holiday Mtg.
20 Sawdust Session
30 Board Mtg. - Location TBD



This Month's Demonstrator - Dan Ackerman

I started turning 26 years ago and still have my beautiful "dog dish" bowl! I guess we all have to start about at the same point. I went through the normal learning process of trial and error until I ran for the national AAW board and started going to the annual symposiums as part of board duties and got to watch some of the experts, learned a great deal and then REALLY started to turn full time. I made big bowls, small bowls, pens, and hollow forms (big and small). I made boxes with slip fit lids and threaded lids. We even had a production turning business for ten years ending up with 22 gift items (all cocobolo) and mostly of our designs. I turned 10-12 hrs a day, seven days a week to try to keep up with Kathys sales (and we still lost money!) But that's another story, ask if you want to hear the gory details. It was one of those "Life's a bitch, then you lose money" stories.

When we quit the production, the shows, the travel, the hotels and hotel meals and took a look at what we were doing, I said no more, I want to turn one-of-a-kind boxes and I was off and running. The carving comes from when I was a kid and did plenty of carving with pen knife and then chisels. The carving is a recent adaptation and has added a whole new demension to make One-of-a-kind boxes. I have gathered a small but consistent following of collectors that appreciate the work. I have developed a "three shows a year" approach: Baltimore ACC, San Francisco ACC and the Philadelphia Museum Show. Because of the economy I have decided to take this year off from shows to tend my grapes and figs and rebuild my corvairs. And I have found that there is life with only minimal turning!!

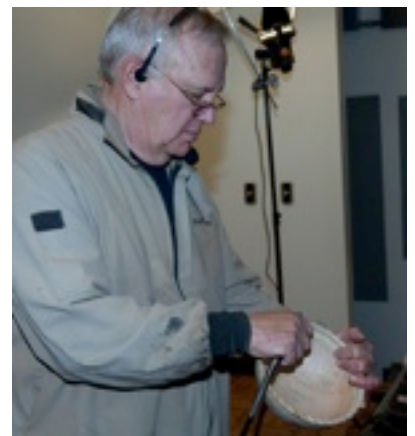
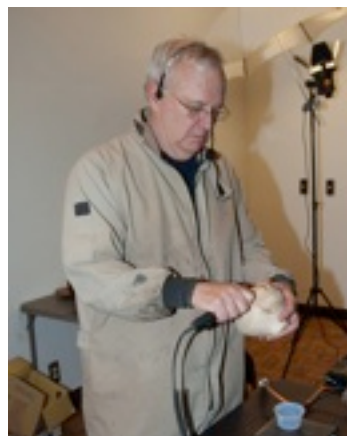
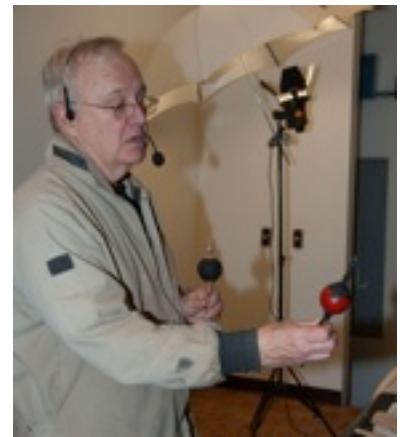
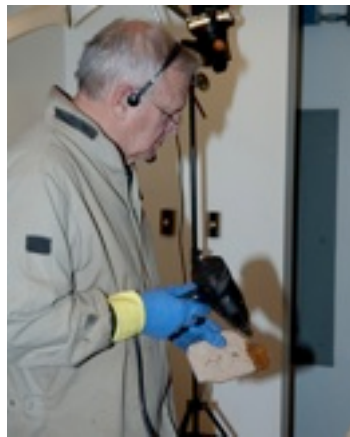
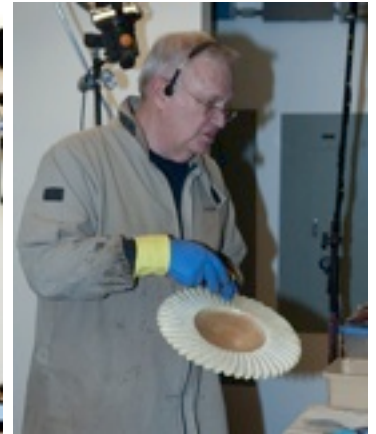
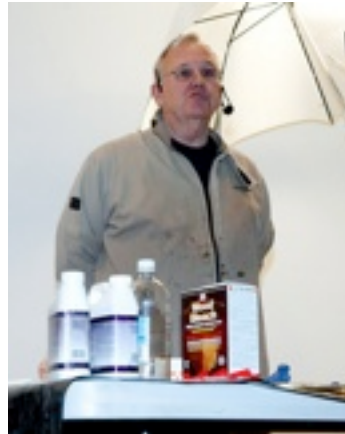
I look forward to seeing you all again and hopefully answering lots of questions about anything and sharing with you some of my 26 years behind the tools.





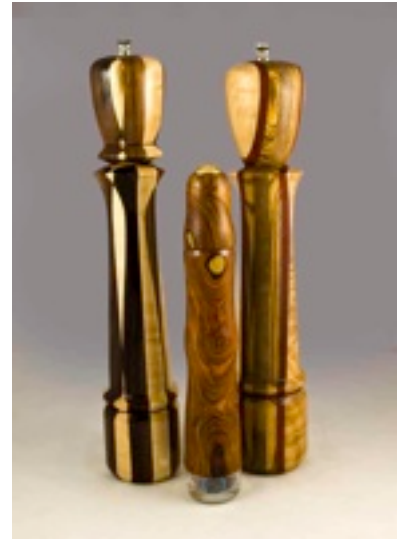
Last Month's Meeting - John Moe

Photos by Fred Abeles: For additional Club photos by Fred please go to <http://avoided-artist.smugmug.com/Woodworking>





Last Month's Show & Tell Items
Photos by Bob Seivers





Announcements

Are you a new member or visiting our club for the first time?

We are glad you are here and want to welcome you to our general membership meeting. **Please introduce yourself to an officer or mentor so we can welcome you.**

Need help with a splintering question?

Contact one of our "MENTORS." These club members have stepped up and would like to use their knowledge and expertise to help other turners with their questions. If these turners aren't able to answer your question, they will do their best to help you find a solution.

SPSW Mentors

- **Ted Bartholomew**
(253) 779-0819
- **Eric Lofstrom**
(253)-320-4788
- **Jim Cotter**
(206) 954-9548
- **Pat McCart**
(253) 370-8986
- **Paul Crabtree**
(253) 273-2147
- **John Moe**
(425) 643-4522
- **Jack Hegseth**
(360) 832-8499
- **Dave Schweitzer**
(360) 432-9509
- **Hal Johnson**
(425) 788-2221

- **SEATTLE AAW MEMBERSHIP MEETING** – 2nd Thursday of each month, Overlake School in Redmond
- **OLYMPIA AAW MEMBERSHIP MEETING** – 4th Thursday of each month, Thurston County Fairgrounds
- **A NOTE FROM OUR LIBRARIAN** - We are trying to take an inventory of the books and DVD's in our library to see what needs to be replaced or purchased. In order to take a proper inventory we are asking all members to return any items that they may have checked out. A preliminary review of checked out items indicates that many items have been checked out for more than 6 months. Please see the list below; if you have any of the items on this list, please return them at this month's meeting.

Item #	TITLE	AUTHOR	Media Type
1	Tips for Turners - Vol 1	David Ellsworth	VHS converted to DVD
2	Tips for Turners - Vol 2	David Ellsworth	VHS converted to DVD
4	Techniques and Projects - Video 1	Bonnie Klein	VHS converted to DVD
5	Turned Bowls - Video 2	Bonnie Klein	VHS converted to DVD
6	Turned Boxes - Video 3	Bonnie Klein	VHS converted to DVD
7	Turning Unusual materials - Video 4	Bonnie Klein	VHS converted to DVD
8	Turning Boxes with Threaded Lids - Video 5	Bonnie Klein	VHS converted to DVD
9	Hollow Turning	John Jordan	VHS converted to DVD
10	Bowl Turning	John Jordan	VHS converted to DVD
12	Woodturning Projects - Vol 2	Nick Cook	VHS converted to DVD
14	The Basic Box	Ray Key	VHS converted to DVD
18	Turning Boxes	Richard Raffan	VHS converted to DVD
31	Woodturning - A Foundation Course	Keith Rowley	VHS converted to DVD
32	Turning Projects from Scrap	Robert Rosand	VHS converted to DVD
33	The 'Slim Line' Pen	Russ Fairfield	VHS converted to DVD
35	Segment Wood turning	R.P. Corriveau	VHS converted to DVD
42	Hollow Vessels with Side Twists	S. Mortimer	VHS converted to DVD
43	Cutting and Sharpening for Woodturning	Chris Stott	VHS converted to DVD
46	History of Turning	Ernie Newman	VHS converted to DVD
47	Sharpening Turning and Carving Tools	J. Kingshott	VHS converted to DVD
48	3-sided Vase Turning	Bob Sievers	VHS converted to DVD
50	Turning Bowls with Chriss Stott	Chris Stott	VHS converted to DVD
51	Basic Offcenter Turning	Chris Stott	VHS converted to DVD
52	First Steps in Woodturning	Chris Stott	VHS converted to DVD
53	Twists and Advanced Turning	Dennis White	VHS converted to DVD
58	Woodturning Projects Vol 2	Nick Cook	VHS converted to DVD
59	Offset Turning	Bob Sievers	VHS converted to DVD
62	Goblet w/Twisted Stem and Finial	Stuart Mortimer	VHS converted to DVD
63	Decorative Effects and Coloring	Chris Stott	VHS converted to DVD
67	Square Box	Stuart Batty	VHS converted to DVD
68	Flat Boxes	Johannes Reiber	VHS converted to DVD
70	Shop Secrets from Master Craftsman	Time Life Art of Woodworking	VHS converted to DVD
73	Turning Bowls and Boxes	Chris Stott	VHS converted to DVD
76	Turning Segmented Platters	Russ Fairfield/Ted Bartholomew	VHS converted to DVD
78	Twisted Candlesticks and Twisted Edge Bowls	Stuart Mortimer	VHS converted to DVD
82	Turning Wood	Richard raffan	VHS converted to DVD
83	Woodturning Projects	Richard Raffan	VHS converted to DVD
201	Polychromatic Assembly for WT *BOOK*	E. Brown & C. Brown	Book
202	Woodturning Woodworkers Class *BOOK*	Barrons	Book
204	Penturners Workbook	Barry Gross	Book
205	Jigs,Fixtures, and Shop Furniture	Nick Engler	Book
207	Build Your Own Furniture	Peter Stamberg	Book
210	Easy to make Childrens Furniture	David Stiles	Book
211	Country Furniture	Nick Engler	Book
303	WT-Fundamentals of Sharpening	AAW-2006	DVD
401	More Woodturning	Fred Holder	DVD



Announcements Continued

- **Wooden Laser Engraved Name Tags** are now available. The cost is \$10. To order a name tag please see Les Johnson at our supplies table at the monthly meeting.
 - **Mark your calendars- the Woodturners of Olympia WA 2009 “Creativity in Woodturning” Symposium** will be held Saturday, July 25, 2009. Eric Lofstrom will begin the day with a demonstration on woodturning basics. Eric will be followed by Jimmy Clewes. Jimmy is a well-known teacher and demonstrator in his native England as well as here in the USA. He will be performing demonstrations covering:
 - Design, shape, form & aesthetics
 - Oriental Boxes
 - Turning a twist and long stem goblet, and coloringsThe cost for the full day is \$70 for early payment. After June 1, 2009 the cost is \$80. Children under the age of 18 can register for \$10 if attending with a paying adult. Lunch is included in the cost if payment is received before July 12. Demonstrations will start promptly at 8 a.m. and end by 4:30 p.m. Door prize drawings will be made after the final presentation. Location is the Komachin Middle School located at 3650 College St. SE, Lacey, WA 98503. For more information or to register see <http://www.woodturnersofolympia.org/> or send payment directly to Al Price at 4112 Teakwood Ct. SE, Lacey, WA 98503. Questions may also be directed to Al at 360-791-0396 or aprice44@aol.com
- In addition to the symposium, Jimmy will be putting on two one day classes for up to 8 people per class. The first class will be for beginning turners and the second will be for intermediate turners. A one day class with Jimmy will cost \$125 and two days will be \$250. The classes will be held on the 26th & 27th.
- Please email Larry Miller at sawdusterlarry@hotmail.com or Al Price at aprice44@aol.com you're interested. The classes will be Sunday/Monday, July 26-27.
- **The South Puget Sound Woodturners now has a club policy for harvesting wood as a club function. Please go to our website <http://www.SPSWoodturners.org> for details.**
 - **Last chance to plan to plan your trip to this year's AAW symposium.** It will be held in Albuquerque, NM on June 26 - 28, 2009. Please go to <http://www.woodturner.org/sym/sym2009> for details on this year's Symposium.
 - **Blinded Veterans Donations - Bob Mower** is still accepting donations for the blinded veterans' auction. Bob Mower volunteers with the association of Blinded Veterans. Every year the association has an auction to raise money for a scholarship fund for the children of blinded veterans. Bob is asking for donations of turned objects from our members for the auction. Please remember that if not for these brave men and women we would not have the freedoms and quality of life we enjoy today.
Bob would also like to thank all those who donated vendor appreciation gifts.



Upcoming Club Raffles

Tickets \$2.00 each or 3 for \$5.00

The next drawing will be held at the April meeting.

- In May tickets will go on sale for a **Jet Mini Lathe** with the drawing being held in July.

The winner of last month's draw for a class with Eric Lofstrom was Gary Clark. The prize also includes lunch provided by Pat McCart (I hear Pat barbecues a mean New York Strip). Congratulations Gary and Bon Appetit.

Classified Ads

Would you like to place an ad? Contact Jeff Marsden at (206) 347-3521 or jeffmseattle@yahoo.com

2009 SPSW Membership: \$25 for single / family membership (only one card issued per \$25). Contact Fred Reinke at the general membership meeting or contact our treasurer, Paul Crabtree at (253) 273-2147 or crabtreepaul@yahoo.com

For Sale Great starter lathe. Rockwell, 4-speed, 3/4 HP, factory metal stand, rigged for outboard turning. Call for more specs, or come and see. \$275.00. Perry Miller. 206-824-2990.

This month's Club Special - Please remember to support those who support us. Current membership card must be presented at time of purchase to qualify for special offers from the vendors below. Offers are valid for in-store purchases only.



Woodcraft furnishes all types of turning supplies in addition to a wide general stock of wood-working equipment. Additionally, a 10% discount (some exclusions apply) is available off your purchases when you show your current club membership card.

This month's Woodcraft Turner's Club Special: Sierra Mold Diamond Dressing tool. This is the only dressing tool you will ever need for truing/cleaning the grinding wheels on your bench grinder. The Sierra Mold Diamond Dressing Tool comes highly recommended by Captain Jack (Jack Wayne) and is the only tool he uses to true his grinding wheels.

In addition to your club discount receive an additional 5% off of the retail price. This offer is limited to in-store sales only. Sale lasts until June 17th, 2009.

Your Seattle **Woodcraft** is located at 5963 CORSON AVE SOUTH, SEATTLE. Tel: (206) 767-6394.



Club supplies

The following items are available for purchase at the monthly meetings. The proceeds earned from the sale of these items go back into the club.

CODE	DESCRIPTION	PRICE
	GLUE	
HS-4	HOT STUFF (Thin) 2 oz	9.00
HST-4	SUPER "T" (GAP) 2 oz	9.00
HS-4T	SPECIAL "T" (Thick) 2 oz	10.00
BSI	5 MIN. EPOXY 4.5 OZ 4.5 oz	6.00
	ACCELERATOR	
QA-6	NCF QUICK AEROSOL 6 oz	11.00
	NCF MILD 2 oz	6.00
	COMPANION PRODUCTS	
US-1	ULTRA SOLVENT 2 oz	5.00
HT-600	GLUE CAP REPLACEMENTS	1.00
PT-100	TIP EXTENSIONS 4	1.00
301	TIP EXTENSIONS 3	1.00
303	LONG TIPS 4.5 oz	1.00
322	CA APPLICATOR FINE	1.00
	OTHER	
IND	INDEX WHEELS	20.00
SEAL	SEALER 1 gal	12.00
	FINISH 1 pt	12.00
	FRICTION POLISH 1 pt	14.00
	SANDING	
MICRO M	3" x 6" SHTS 1 ea	13.00
MICRO M	3" x 6" SHTS 2 ea	24.00
	GRITS 80 THROUGH 1000	
	SANDPAPER (5) 5	2.00
	GRITS 80 THROUGH 220	
	SAND CLOTH (1)	1.00
	DISKS	
DISCS	2" SANDING KIT	25.00
DISCS	3" SANDING KIT	30.00
	GRITS 80, 120, 180 & 280	
DISCS	2" SANDING KITS 10	2.00
DISCS	3" SANDING KITS 10	3.00



Vendors



Tukwila (206) 244-9161
<http://www.rockler.com>

Woodturning Classes
Saturdays 9am-4pm
\$65 Plus Tax
Ted Bartholomew (253) 779-0819

CRAFT SUPPLIES USA
— THE WOODTURNERS CATALOG —

Tropical Exotic Hardwoods
Of Latin America
Mitch Talcove (760) 434-3030

(800) 551-8876
<http://www.woodturnerscatalog.com>



Seattle (206) 767-6394
<http://woodcraft.com>

Equipment Sales & Surplus
1801 West Valley Hwy N
Auburn, WA 98001-1605
(253) 804-3211



Sumner Woodworking Store
John and Joan Schmit
Sumner (253) 891-9413

(800) 683-8876
packardwoodworks.com



Treeline
1221 East 1120 South
Provo, UT 84606
(800) 598-2743
<http://www.treelineusa.com>



(800) 547-5461

Klingspor's
Woodworking

P.O. Box 3737 Hickory NC 28603-3737
(800) 228-0000

CROSSCUT
HARDWOODS
Seattle (206) 623-0334