



Chips & Shavings

SOUTH PUGET SOUND
WOODTURNERS
(SPSW)

August 13, 2009



They did it again!

For the second year in a row the Woodturners of Olympia club held a very informative and well attended woodturning symposium.

Once again our own Eric Lofstrom started off the show with a very thorough demonstration of some of the basics of getting started at the lathe. Eric provided a very helpful handout that covered many useful topics and resources available to any woodturner.

Eric then did an outstanding job demonstrating the proper use of what is to some, myself included, a very intimidating tool. His masterful use of a razor sharp 1-3/8" Alan Lacer skew produced shavings that any woodturner would be proud to have on their shop floor as he skillfully reduced a 3x3x12 turning blank to a smooth cylinder in less than a minute.

He finished off his demonstration with a terrific display of the various cuts that can be made with a properly sharpened bowl gouge.

Internationally renowned woodturner Jimmy Clewes showcased his amazing skills and delightful charm as he turned several pieces and wowed everyone with his high-speed turnings. Jimmy's personality and quick wit captivated everyone in attendance. If you ever take a trip to Vegas and want a sure bet that pays abundant dividends take a 3-day class at Jimmy Clewes shop.

As summer slowly winds down I find myself, once again, actively looking for members who are willing to volunteer for one of the several club positions that need to be filled. No experience is necessary and new members are strongly encouraged to take their turn in the box.

See you on the 20th, and remember be safe make chips and have fun!
~Pat McCart, SPSW President

Contents:

President's Letter	Pg. 1
SPSW Contacts	Pg. 1
SPSW Calendar	Pg. 2
Monthly Demonstration	Pg. 3
Meeting Pictures	Pg. 4
Mentor Contacts	Pg. 5
Announcements	Pg. 5
Classifieds	Pg. 6
Woodworking Supplies	Pg. 7
Vendors	Pg. 8

SPSW Contacts:

President: Pat McCart
(253) 370-8986
jmccart5464@msn.com

V. President: Eric Lofstrom
(253) 320-4788
ellofstrom@msn.com

Treasurer: Paul Crabtree
(253) 273-2147
crabtreepaul@yahoo.com

Membership: Fred Reinke
(253) 246-9953
reinkefnd@comcast.net

Editor: Jeff Marsden
(206) 347-3521
jeffmarsden@me.com

Sawdust Sessions:
Jim Cotter (Coordinator)
(206) 954-9548
cotterjimmy@hotmail.com

Program Director: Jim Cotter
(206) 954-9548
cotterjimmy@hotmail.com

Industry Coordinator:
Bob Mower
(253) 846-8277
zeebob33@gmail.com



Participation Tickets – If you participate in **Show & Tell**, **Wood Donation**, or **Set-Up/Clean-Up**, make sure to fill out your **Participation Tickets**.

THIS MONTH AT A GLANCE

- **MEMBERSHIP MTG - Aug. 20th** (Thur.), 7:00-9:00 pm at Fife Senior Center
- **SAWDUST SESSION - Aug. 22nd**
- **BOARD MTG. - Aug. 25th** (Tues.), 7:00-8:30 pm at Les Johnson's, members welcome (RSVP to Pat McCart)

SPSW CALENDAR – 2009 At A Glance

Jan. 15 Membership Mtg:-
Fred Holder - Making Chinese Balls
17 Sawdust Session at Pat McCart's
27 Board Mtg. - Les Johnson's

Feb. 19 Membership Mtg:-
Malcolm Tibbets Segmented turning
19 **Special all day class with Malcolm Tibbets - Segmented Turning**
21 Sawdust Session
24 Board Mtg. - Les Johnson's

Mar. 19 Membership Mtg:-
2008 Annual Holiday meeting
21 Sawdust Session
31 Board Mtg. - Les Johnson's

Apr. 16 Membership Mtg:- **Dave Schweitzer - Wooden Bowls & Decorative Effects**
18 Sawdust Session at Bob Sweazey's
28 Board Mtg. - Les Johnson's

May 21 Membership Mtg:- **Dan Ackerman - Turned Boxes**
23 Sawdust Session
26 Board Mtg. - Les Johnson's

June 18 Membership Mtg:-
Summer Symposium
20 Sawdust Session
30 Board Mtg. - Les Johnson's

July 16 Membership Mtg:-
Michael Dresdner - Finishing Techniques
18th **Picnic / Wood Auction**
28 Board Mtg. - Les Johnson's

Aug. 20 Membership Mtg:-
Lynn Hull - Metal Spinning
22 Sawdust Session
25 Board Mtg. - Les Johnson's

Sept. 17 Membership Mtg:-
Dave Schweitzer
19 Sawdust Session
25 Board Mtg. - Les Johnson's

Oct. 15 Membership Mtg:-
Fall Symposium
17 Sawdust Session
27 Board Mtg. - Les Johnson's

Nov. 19 Membership Mtg:-
TBD
21 Sawdust Session
24 Board Mtg. - Les Johnson's

Dec. 18 Membership Mtg:-
Annual Holiday Mtg.
20 Sawdust Session
30 Board Mtg. - Location TBD



This month's demonstrator is Lynne Hull



This month's meeting - will feature metal spinning artist Lynne Hull.

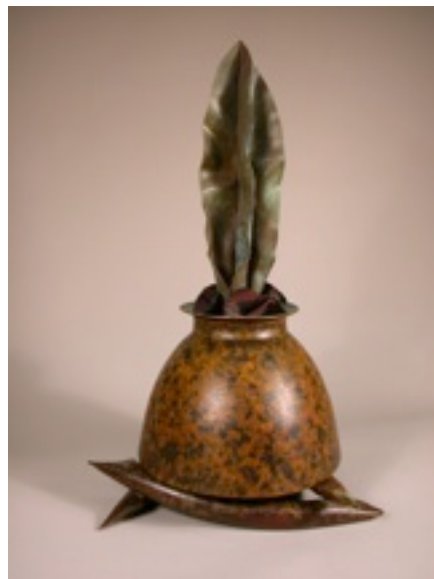
Lynne Hull was raised in the Pacific Northwest which helped shape her aesthetics and artwork. The natural wonders and diverse landscapes in the state of Washington have provided her with a wonderful palette to draw from. She enjoys contrast and comparison. Living on the Pacific Rim provides this for her.

Lynne uses the vessel as a sculptural format. This universal symbol allows her to connect the old with the new, the east with the west and the technical with the artistic. The vessel represents self, mother earth and signs of life. The containment of space

created by the vessel provides a platform to convey thoughts and emotions.

One of the methods Lynne uses to create her vessels is the ancient art form of metal spinning. She is recognized for using this industrial process to create her art. Lynne states: "Spinning allows me to grow metal in my studio."

In Lynne's early work, the vessel remained empty, providing its owner the opportunity to make use of the space. In her more recent work she has begun to address the interior. Perhaps she has begun to know her inner self?





Club Picnic Photos July 18th, 2009





Announcements

Are you a new member or visiting our club for the first time?

We are glad you are here and want to welcome you to our general membership meeting. **Please introduce yourself to an officer or mentor so we can welcome you.**

Need help with a splintering question?

Contact one of our "MENTORS." These club members have stepped up and would like to use their knowledge and expertise to help other turners with their questions. If these turners aren't able to answer your question, they will do their best to help you find a solution.

SPSW Mentors

- **Ted Bartholomew**
(253) 779-0819
- **Eric Lofstrom**
(253)-320-4788
- **Jim Cotter**
(206) 954-9548
- **Pat McCart**
(253) 370-8986
- **Paul Crabtree**
(253) 273-2147
- **John Moe**
(425) 643-4522
- **Jack Hegseth**
(360) 832-8499
- **Dave Schweitzer**
(360) 432-9509
- **Hal Johnson**
(425) 788-2221
- **Bob Sievers**
(360) 897-8427

- **SEATTLE AAW MEMBERSHIP MEETING** – 2nd Thursday of each month, Overlake School in Redmond
- **OLYMPIA AAW MEMBERSHIP MEETING** – 4th Thursday of each month, Thurston County Fairgrounds
- **Wooden Laser Engraved Name Tags** are now available. The cost is \$10. To order a name tag please see Les Johnson at our supplies table at the monthly meeting.
- The South Puget Sound Woodturners now has a club policy for harvesting wood as a club function. Please go to our website <http://www.SPSWoodturners.org> for details.
- In order to receive club discounts from some of our mail order vendors we are required to provide them with an up to date membership list. This is so they can verify that you are a member in good standing with the club and therefore entitled to the discount they provide to us. If you would prefer not to be included on the list please email Fred Reinke at reinkefnd@comcast.net.
- Please note that if you remove your name from the list the vendor will not honor a club discount for your phone or (e)mail purchases.

A memorial service for John Swanson will be held at John & Bev's home on September 19th. It is tentatively planned for 3 or 4 pm. The exact time will be decided a little later and will be emailed out to the membership. Pastor Greg will deliver a short service with prayer and reading. Refreshments will follow. All are invited to come and celebrate John's life. Further information will also be provided at this month's meeting.



Upcoming Club Raffles

Tickets \$2.00 each or 3 for \$5.00

There are presently no upcoming raffles. Please check back here next month for updates.

Classified Ads

Would you like to place an ad? Contact Jeff Marsden at (206) 347-3521 or jeffmseattle@yahoo.com

2009 SPSW Membership: \$25 for single / family membership (only one card issued per \$25). Contact Fred Reinke at the general membership meeting or contact our treasurer, Paul Crabtree at (253) 273-2147 or crabtreepaul@yahoo.com

Lathe for sale: Jet 12" 5(?) speed (finally got a 1642 EVS!) \$300, OBO.

ShopSmith 500 (or 510?) Variable speed drive motor, 10" Tablesaw, 12" lathe, horizontal or vertical drillpress, 12" bandsaw, 4" Jointer, complete factory manual. Bandsaw and Jointer never used. Also \$300 OBO for the entire package.

All steel 30" x 72" workbench from Boeing shops. Free, but either bring tools to dismantle, or 6 men and a boy to lift it into your truck or trailer.

**Mike Price
Tacoma, 253-759-9860**



Club supplies

The following items are available for purchase at the monthly meetings. The proceeds earned from the sale of these items go back into the club.

CODE	DESCRIPTION	PRICE
	GLUE	
HS-4	HOT STUFF (Thin) 2 oz	9.00
HST-4	SUPER "T" (GAP) 2 oz	9.00
HS-4T	SPECIAL "T" (Thick) 2 oz	10.00
BSI	5 MIN. EPOXY 4.5 OZ 4.5 oz	6.00
	ACCELERATOR	
QA-6	NCF QUICK AEROSOL 6 oz	11.00
	NCF MILD 2 oz	6.00
	COMPANION PRODUCTS	
US-1	ULTRA SOLVENT 2 oz	5.00
HT-600	GLUE CAP REPLACEMENTS	1.00
PT-100	TIP EXTENSIONS 4	1.00
301	TIP EXTENSIONS 3	1.00
303	LONG TIPS 4.5 oz	1.00
322	CA APPLICATOR FINE	1.00
	OTHER	
IND	INDEX WHEELS	20.00
SEAL	SEALER 1 gal	12.00
	FINISH 1 pt	12.00
	FRICTION POLISH 1 pt	14.00
	SANDING	
MICRO M	3" x 6" SHTS 1 ea	13.00
MICRO M	3" x 6" SHTS 2 ea	24.00
	GRITS 80 THROUGH 1000	
	SANDPAPER (5) 5	2.00
	GRITS 80 THROUGH 220	
	SAND CLOTH (1)	1.00
	DISKS	
DISCS	2" SANDING KIT	25.00
DISCS	3" SANDING KIT	30.00
	GRITS 80, 120, 180 & 280	
DISCS	2" SANDING KITS 10	2.00
DISCS	3" SANDING KITS 10	3.00



Vendors



Tukwila (206) 244-9161
<http://www.rockler.com>

Woodturning Classes
Saturdays 9am-4pm
\$65 Plus Tax
Ted Bartholomew (253) 779-0819

CRAFT SUPPLIES USA
— THE WOODTURNERS CATALOG —

Tropical Exotic Hardwoods
Of Latin America
Mitch Talcove (760) 434-3030

(800) 551-8876
<http://www.woodturnerscatalog.com>



Seattle (206) 767-6394
<http://woodcraft.com>

Equipment Sales & Surplus
1801 West Valley Hwy N
Auburn, WA 98001-1605
(253) 804-3211



Sumner Woodworking Store
John and Joan Schmit
Sumner (253) 891-9413

(800) 683-8876
packardwoodworks.com



Treeline
1221 East 1120 South
Provo, UT 84606
(800) 598-2743
<http://www.treelineusa.com>



Klingspor's
Woodworking

P.O. Box 3737 Hickory NC 28603-3737
(800) 228-0000

CROSSCUT
HARDWOODS
Seattle (206) 623-0334

(800) 547-5461